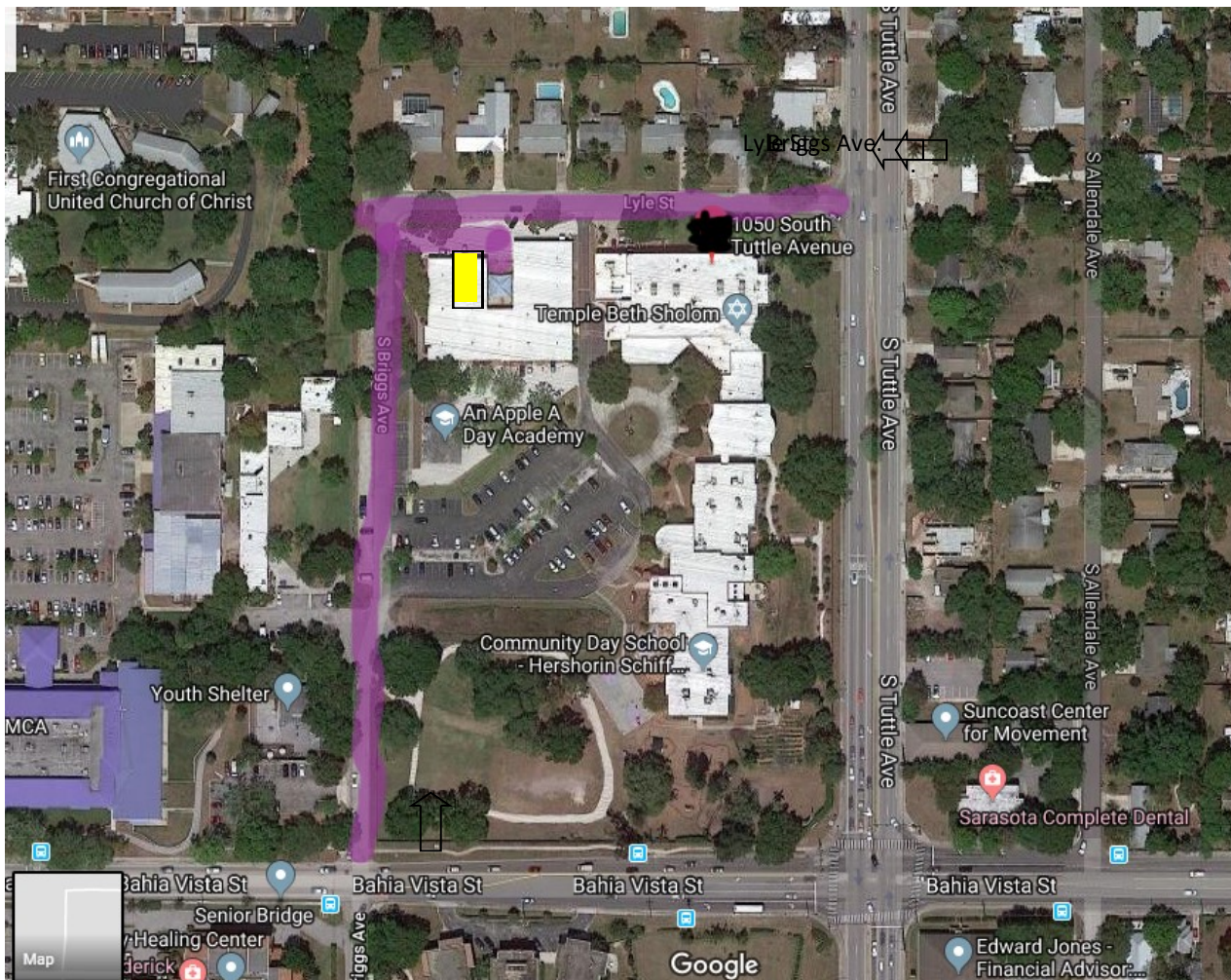


Directions to JFCS of the Suncoast—Cancer Support & Wellness Programs S. Tuttle Campus located at 1050 S. Tuttle Avenue, Building #1, Lyle St. Courtyard Entrance, Sarasota, Florida



From Fruitville Rd., take S. Tuttle South for approximately 1 mile. Make a right on Lyle Street (just before the S. Tuttle/Bahia Vista Intersection). Drive to the end of Lyle St and make an immediate left into the white gravel parking lot on the north side (Lyle Street side) of the stand-alone building.

From Beneva Rd., take Bahia Vista west, go through the Bahia Vista/S. Tuttle intersection. Make a right on S. Briggs and travel north on S. Briggs through the Temple Beth Shalom parking lot. As you approach Lyle St., make right into the white gravel parking lot on the north side (Lyle Street side) of the stand-alone building.



Drive in from S. Briggs Avenue or Lyle Street to white shell parking lot at the northwest corner of the campus. Enter through center courtyard on Lyle Street side of Building 1. JFCS Cancer Support & Wellness Rooms are located to the right (see yellow highlighted area)

To learn more about Cancer Support & Wellness Programs schedule of groups, classes, special events and hours of operation please visit www.jfcs-cares.org or contact Bambi Furtado, LMHC, 941-366-2224 ext. 167