



# CELEBRATING SILVER

## JFCS...25 YEARS OF HOPE & HEALING



JEWISH FAMILY & CHILDREN'S SERVICE  
OF SARASOTA-MANATEE, INC.

ANNUAL REPORT 2010-2011

## MESSAGE FROM THE BOARD CHAIR /CEO



*Marie Monsky*

Marie Monsky  
Board Chair



*Rose Chapman*

Rose Chapman, LCSW  
President/CEO

**T**HIS YEAR, JFCS CELEBRATED its Silver Anniversary...25 years of offering hope and healing to people in our local community. JFCS has reached this milestone thanks to each of you...our business and community partners, donors, friends, foundations, funders, staff and volunteers.

To each of you, our major stakeholders and investors, we extend our thanks for your trust, commitment and dedication. We also want to ensure that you are fully informed of how we invest your donations of time and money to improve the lives of people who turn to JFCS for help.

This Annual Report provides you with a report card on our activities and efforts to make a positive impact on the lives of individuals in our local community. Here are just a couple of highlights from this report:

- 440 volunteers provided 11,479 hours of service to enhance the programs of JFCS by helping the most vulnerable members of our community. Volunteers serve as mentors/tutors to at-risk children, friendly visitors for homebound seniors, and provide an emotional/spiritual connection for individuals isolated due to illness
- 21,969 clients received 76,390 services from JFCS including case management, individual and group counseling, life skills education and assistance with basic life necessities including food and emergency financial assistance to prevent homelessness



In 2010-2011, JFCS faced many challenges ...for the first time, people seeking help were placed on waiting lists; emergency financial assistance was limited to clients with children and to families with disabled adults; and due to cutbacks in public funding, several of our programs were scaled back and the level of services decreased to targeted special needs clients.



Even during these difficult financial times, JFCS remains committed to helping individuals and families who fall in between the cracks and have no where else to turn. We will continue to embrace the message of our tagline, *When You Can't Do It Alone* because JFCS provides **a safety net** for the entire community.



Our financial stability is of course strengthened thanks to your support and commitment. More than 1,300 supporters made a donation to JFCS this year and many of you helped celebrate our Silver Anniversary by attending one of our five "sold out" sponsored events. At a time when donors are evaluating their charitable contributions, JFCS is most fortunate to have your involvement and vote of confidence.

Together, we all can lend a helping hand and continue to offer **HOPE** and **HEALING** to our community.



### *Our Mission ...*

to help people overcome life's challenges, **EMPOWERS** our community

### *Our Programs ...*

counseling, prevention, intervention, outreach and education, **POSITIVELY IMPACT** the lives of children, families and seniors

### *Our Focus ...*

to provide services on a non-denominational basis, **TOUCHES** the entire community



## COUNSELING SERVICES

*"JFCS has really helped me overcome and rebuild my life. I have the greatest mentor, she's a very good and concerned person. I really appreciate the kindness and concern, she's the best!"*

**JULIE, MENTOR FOR SUCCESS PARTICIPANT**

*"JFCS is helping me realize that I don't have to live the life I was living. I can be happy and productive without using drugs, getting me closer to my goals, whether little or big. It's helping me to be that woman, mother, friend, daughter I knew I could be before I went down the wrong road."*

**BRANDY, VIP-ER PARTICIPANT**

*"I love the STARS program. It gives me a chance to come and hang out with my friends and learn valuable things."*

**BECKY, STARS PARTICIPANT**



**C**ounseling Services provides comprehensive programming for children, adults, families and seniors at JFCS. These essential individual, group and family components address issues such as depression, anger management, parenting, marital conflict, substance abuse, bereavement, stress management, divorce and remarriage, and domestic abuse. Intake services handled 3,000 calls for information and referral services. A total of 30,944 services including individual and group counseling and support groups were provided to 7,945 clients in 2010-2011. The following programs are included in the Counseling Department:

- **Parenting, Marriage, Bereavement and Anger Management** support groups.
- **STARS Program**, a new venture this year, is providing fun and learning opportunities through social and life skills groups for differently-abled individuals and their families.
- **YMCA/JFCS Collaboration** provides individual and family counseling to children and their families involved with the Safe Children Coalition.
- **Healthy Start Coalition of Manatee County, Inc. & Sarasota County, Inc.** offers individual, family and couple counseling to expectant and new parents to adjust to the demands of a new baby.
- **Mentor for Success Program** offers case management services and trained mentors to persons that walk a difficult path from incarceration to healthy living in the community, reducing recidivism by utilizing support and connection to much needed resources.
- **VIP-ER (Voluntary Interim Placement - Enhanced Recovery Program)** provides wrap-around facilitation and family reunification services for individuals in substance abuse treatment at the Salvation Army.
- **Kosher Food Pantry** distributes canned goods and food vouchers for perishable items so no family should go without the basic necessities.
- **Healthy Families/Healthy Children** provides communication and parenting skill building group classes and in home support services to adult, unmarried couples are who expecting a baby or have given birth within the last three months.
- **Building Strong Families Homelessness Prevention** program provides case management, counseling and cash assistance to families at-risk of becoming homeless, with the goal of emotional and financial stability and self-sufficiency.
- **Operation Military Assistance Program** offers case management services and/or financial assistance to veterans and currently deployed personnel of Operation Enduring Freedom or Operation Iraqi Freedom and their families.



## YOUTH SERVICES

**J**FCS strives to create a safe and supportive environment for children and adolescents, ensuring their emotional development and well-being. We provide intervention programs for at-risk students who need counseling, mentoring and tutoring to support them both academically and emotionally. A total 19,436 services including individual and group counseling were provided to 3,261 youth through the Youth Services Department in 2010-2011.

- **The Safe Alternative to Out-of-School Suspension Program (SATOSS)** provides services to at-risk youth at Booker, Heron Creek and McIntosh Middle Schools in Sarasota County, Lincoln Middle in Palmetto and Horizon's Academy in Manatee County. Students receive individual and group counseling from JFCS social workers stationed in the schools and if appropriate, are matched with trained volunteer mentors who provide guidance and positive adult role modeling, allowing students to remain in school while working to learn alternative coping skills.
- **Emma's Dream Team** offers counseling services to students at Emma E. Booker Elementary School who were involved in destructive behavior. An on-site coordinator and trained adult mentors and tutors provide academic and emotional support.
- **JFCS Summer Programs** involve middle school youth, ages 11-14. They participate in life skills, career education, and cultural awareness at both McIntosh Middle School in Sarasota and Lincoln Middle School in Palmetto.
- **SCTI Program** provides case management and mentoring support to young adults ages 18-21 who are under or unemployed wanting to further their education. The program supports young adults in receiving a GED and SCTI vocational training with the goal of sustainable employment and an independent future.
- **Career Counseling** is a contracted program available to students in six Sarasota County high schools which offers career education services including the development and maintenance of a Career and Academic Planning Portfolio to assist students with making the transition from high school and provides resources to develop career pathways.
- **Motivating Adolescent Girls In Crisis (MAGIC)** Prevention and Diversion program targets girls, ages 10 -17 to reduce or prevent their involvement with the juvenile justice system. Services emphasize learning skills and behaviors that reduce the risk of destructive behaviors offering an integrated, wraparound service model that includes assessment, mental health intervention, individual and family counseling, psycho-educational programs and family support services.

*"The program has helped me control my anger and make better choices so I don't get into trouble at school"*

**SHONTIKA, MAGIC PROGRAM PARTICIPANT**

*"Emma's Dream Team program has contributed immensely to the social and emotional development of our students at-risk and their families. It has significantly impacted our students' academic achievement. Without this program, our students would end up in more restrictive settings or residential treatment centers."*

**AUGUSTA OBI, SCHOOL COUNSELOR/  
HOME-SCHOOL LIAISON**

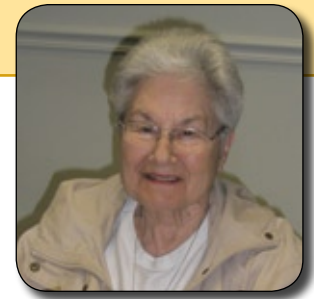
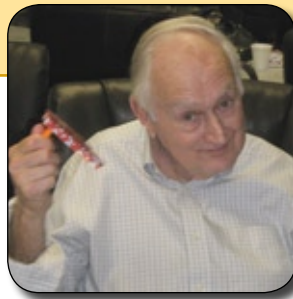
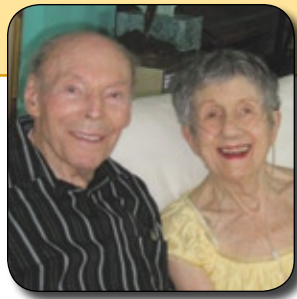
## SENIOR SERVICES

*“My children live out of state and have been worried that I am alone here. Having a JFCS care manager has given us all peace of mind and now I feel safe staying in my own home, which is so important to me.”*

SALLY, CARE MANAGEMENT PARTICIPANT

*“When my wife was diagnosed with Alzheimer’s, I was overwhelmed and could not cope with the fact that I had become her caregiver. JFCS was there to help me and guide me through a very challenging process. I never miss the Wednesday caregiver support group; JFCS is my lifeline.”*

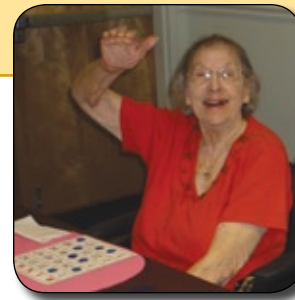
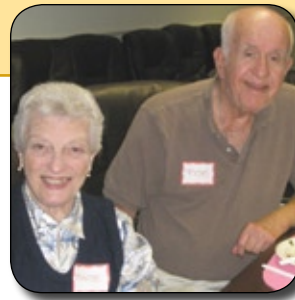
DAVID, CAREGIVER  
SUPPORT GROUP PARTICIPANT



**A**t JFCS, we strive to meet the challenges of aging by providing essential programs and services to our senior clients, preserving their dignity and respect while supporting their desire to live independently in their community.

We offer a continuum of professional and volunteer services for aging adults and their families who may need support in adjusting to the new situations which impact us as we all face an unprecedented time of increased longevity: a decline in physical and mental health; losses of mobility, friends, and family support; increased isolation and loneliness; and the particular challenges in becoming a caregiver. Our Senior Services program touched the lives of 4,722 seniors by providing 11,195 services through caregiver support and respite, group and individual counseling, community outreach and education.

- **Senior Outreach Services:** isolated seniors meet for weekly group supportive counseling sessions with a licensed clinical social worker, socialization and a nutritious lunch followed by a variety of programs, both educational and entertainment. Jewish festivals, holidays, and birthdays are celebrated throughout the year. SOS groups meet in Sarasota on Wednesdays and Fridays and at the Jewish Center of Venice on Tuesdays. Transportation to SOS is provided by JFCS handicapped accessible vans.
- **Caregiver Support Groups:** provide opportunities to share with others and receive both support and community resource information from JFCS staff. Groups meet in Sarasota on Wednesdays and in Venice on Fridays.
- **Counseling services** support older adults to cope with mental health concerns, marital conflict or family challenges. Licensed professional social workers can schedule appointments either at JFCS or in your own home.



## SENIOR SERVICES

*“After losing my dearest friend I felt lonely and isolated. My doctor was concerned about my depression and suggested I call JFCS for help. I have a wonderful counselor who comes to my home; she has helped me to gain a new perspective and engage in life again.”*

**RALPH, COUNSELING PARTICIPANT**

*“I have been very pleased with the staff and with their help—they have taught me a lot about care giving and resources available to me.”*

**LISA, SARASOTA CARES PARTICIPANT**

■ **Sarasota Caregiver Counseling and Support Program (SCCSP)** is a federally funded program that targets the needs of caregivers in Sarasota who are caring for a partner with Alzheimer’s Disease or Alzheimer’s Related Dementia. The goal of the SCCSP Program is to provide knowledge and support to caregivers and their families to reduce caregiver stress, increase coping skills to manage daily challenges and provide ongoing support through connections to local resources. The program supports caregivers through implementation of an evidenced-based intervention program that offers:

- individual and family counseling sessions
- wraparound services
- ongoing follow up contacts
- reassurance telephone calls

Community partners include the Area Agency on Aging of SW Florida, Alzheimer’s Association, Memory Disorder Clinic at Sarasota Memorial Hospital, Pines Education Institute and University of South Florida Sarasota-Manatee.

■ **Sarasota CARES**, Caregivers Accessing Resources and Essential Services, helps care partners to identify and connect with community supports and resources; both formal and informal through the professional assistance of Wraparound Facilitators. The Facilitators helps families clarify their needs and assist caregivers in identifying solutions from both the formal (professional service) and informal (family, friends, faith settings) environments resulting in improved outcomes for caregiver loved one’s and reduced stress for the care giver. Sarasota CARES will also match caregivers and their care partner with well trained respite volunteers. Care partners can receive a minimum of 4 hours of respite care per week.

■ **Care Management** enables seniors to age in place safely and with dignity by developing individualized plans of support and connections to essential community resources and offers a local caring connection for out of town families.

## JEWISH PROGRAMS

*“The JFCS Bereavement Support Group and individual sessions pulled me through the worst time in my life. I will always be grateful.”*

**RICHARD, BEREAVEMENT  
SUPPORT GROUP PARTICIPANT**

*“Without the assistance of the Jewish Financial Assistance and Care Management Programs at JFCS we would probably be homeless and financially insecure now. JFCS helped our family financially and emotionally through this difficult time.”*

**GARY & CARA, FINANCIAL CASE  
MANAGEMENT CLIENT**



**C**omforting the mourner, visiting the sick and acts of loving kindness bring good to the world. Jewish tradition and rituals are the guiding force behind our Jewish Programming. Funded in part by the Jewish Federation of Sarasota-Manatee and with the help of 98 trained volunteers, the program provided 3,336 services to 1,532 families, caregivers and individuals in the Jewish community who faced life's challenges in 2010-2011.

Jewish Programs include:

- **Bikkur Cholim (Visiting the Sick)/Friendly Visitors** a program whereby trained volunteers offer spiritual and emotional support and a connection to the Jewish community to those who are ill, had surgery, are otherwise isolated by illness or aging. Visits are provided wherever the client resides be it hospital, home, long term care facility or assisted living residence. Visits are also provided weekly at local hospitals.
- **Community Religious Outreach** offers a Jewish connection to residents of more than 30 nursing homes and assisted living facilities who otherwise might not be able to attend Shabbat, High Holy Day or Festival Services.
- **Bereavement Services** provides group and individual counseling for those dealing with the loss of a loved one.
- **Doula Services** provides trained volunteers to offer emotional support and companionship to care recipients and their families during the end-of-life transition.
- **Prison Ministry** allows for rabbinical visits with Jewish inmates at the DeSoto Correctional Facility in Arcadia for weekly Shabbat services and Torah study as well as spiritual counseling with Jewish inmates at the Sarasota County Jail.
- **Financial Case Management** provides counseling and emergency financial assistance to Jewish residents in need.
- **Grace Rosen Magill Library** exhibits a book collection on Jewish and therapeutic related topics available to check out.

# BUSINESS PARTNERS

We would like to thank our caring friends in the business community, foundation and government sectors and human services network who partner with JFCS to support our programming, events and activities. Together, we make Sarasota and Manatee Counties, and the world, a better place.

## BUSINESS PARTNERS

A Little Shop of Flowers  
ABC 7 & Bob Harrigan  
Advocates in Aging  
Apron Cooking School  
Arcade Lithographing  
Asolo Repertory Theatre  
Benderson Development  
Beneva Flowers  
Bijou Café  
Blue Angel Vodka  
Bookstore 1 Sarasota  
Breakfast House  
Bridge Street Bistro  
Broadway Bar  
Café Americano  
Café Epicure  
Café L'Europe  
Caragiulos  
Children's Healthy Pantry Foundation  
Comcast  
Comerica Bank  
Comfort Keepers  
Cosimo's Brick Oven

Cosimo's Too!  
Cove Cleaners  
Debbie Dannheisser, Artist  
DeLoach Vineyards  
Design Marketing Group, Inc.  
Detwiler's Farm Market  
Dreamweaver Collection  
Etrusco Ristorante Toscano  
First Watch Restaurant  
Florida Ever-Glides, Inc.  
Florida Studio Theatre  
The Founders Club  
Habif, Arogeti & Wynne, LLP  
Harris Private Bank  
Herald-Tribune Media Group  
Hurricane Tennis Academy  
Innovative Dining  
Kilwin's  
Kirk-Pinkerton, P.A.  
Kirkell Silk Studios, Jamie Kirkell  
Kunde Family Estates  
Lakewood Ranch Country Club  
Lerner Cohen Health Care

Libby's Café & Bar  
Livingston, Patterson, Strickland & Siegel  
Longboat Key Club & Resort  
LTM Party Stores  
Lucia Blinn, Storyteller & Poet  
Maison Blanche  
MarVista Docks Restaurant & Pub  
The Meadows Country Club  
The MET Fashion House  
Mi Pueblo El Restaurante  
Michael Saunders & Company,  
Cacchiotti/Monsky  
Michael's On East  
Morgan Stanley  
Morton's Gourmet Market  
Northern Trust Bank  
Oh Mamma Mia!  
The Player's Theatre  
PNC Bank  
Polo Grill & Fête Catering  
Pomona Bistro & Wine Bar  
Publix Super Markets Charities

*Business Partner roster continues on next page*

*Becoming a partner of JFCS links your good corporate name to ours and provides you with an opportunity to expand your visibility in our community. For more information, please call Andria Bilan, VP of Development at 941-366-2224.*

**BUSINESS  
PARTNERS**

**COMMUNITY  
FUNDING  
PARTNERS**

**FOUNDATIONS**

**GOVERNMENT  
GRANTS**



## BUSINESS PARTNERS

## COMMUNITY FUNDING PARTNERS

## FOUNDATIONS

## GOVERNMENT GRANTS

### MORE BUSINESS PARTNERS

Puccini's  
 Rebecca Baxter Photography  
 Re Federico  
 The Ritz-Carlton, Sarasota  
 Rolling Pin Emporium  
 Sally A. Trout Interior Design  
 Salute! Restaurant  
 Sarasota Ballet  
 Sarasota Bay Club  
 Sarasota Magazine  
 Sarasota Opera

Sarasota Orchestra  
 Sarasota Trophy & Awards  
 SCENE Magazine  
 Selva Grill  
 Sights & Sounds A/V, Inc.  
 Sir Speedy of Sarasota  
 SOMA Diner  
 SunTrust Bank, Inc.  
 Sweet Tomatoes  
 Tervis Tumbler  
 Tiburon Golf Club  
 Tommy Bahama's Restaurant & Bar

Too Jay's Gourmet Deli  
 Treviso Restaurant  
 UBS  
 Udell Associates  
 University Park Country Club  
 US Tennis Association  
 USF Sarasota-Manatee  
 Westcoast Black Theatre Troupe  
 W.J. Deutsch & Sons, Ltd.  
 Youthful Aging  
 Yummy Stuff



### COMMUNITY FUNDING PARTNERS

Alliance for Children & Families  
 Early Childhood Mental Health Partnership, Sarasota County  
 Gulfcoast South Area Health Education Center, Inc.  
 Healthy Start Coalition of Manatee County, Inc.  
 Healthy Start Coalition of Sarasota County, Inc.  
 Jewish Federation of Sarasota-Manatee, Inc.  
 Sarasota Family YMCA Safe Children Coalition and the State  
 of Florida Department of Children and Families  
 Suncoast Partnership to End Homelessness, Inc.  
 Suncoast Workforce Board  
 United Way of Manatee County  
 United Way of Sarasota County  
 United Way of South Sarasota County

## FOUNDATIONS

Margaret A. Cargill Foundation  
 Community Foundation of Sarasota County  
     Barbara W. Blumfield Fund  
     Graver Family Fund  
     Dr. Joseph & Esther Landin Memorial Fund  
     Betty Schoenbaum Donor Advised Fund  
     Season of Sharing Fund for Sarasota County  
     Goldjjean & Alan Turow Donor Advised Fund  
 ELNO Family Foundation  
 ExxonMobil Foundation  
 Foundation for Jewish Philanthropies  
 Gulf Coast Community Foundation  
     Anonymous  
     Aaron Family Fund  
     Margie & Charles Barancik  
     Barbara Brizdle & Lawrence J. Schoenberg  
     Judy & Charles Cahn Donor Advised Fund  
     Carol B. Camiener Family Fund  
     Chaifetz Family Fund

Community Foundation at The Venice Golf &  
 Country Club Fund  
 Cornetet Foundation  
 Margot & Warren Coville Charitable Fund  
 Fine Family Foundation  
 Hansen Wilberding Foundation  
 Arnold & Bette Hoffman Family Foundation  
 Ernest & Alisa Kretzmer Charitable Foundation  
 Cheryl Loeffler Charitable Foundation  
 Menell Family Foundation  
 Eugene & Saralyn Oberdorfer Fund  
 Sack Family Foundation  
 Sandy Charitable Fund  
 Betty F. Schoenbaum Charitable Fund  
 Clare & Rich Segall Family Charitable Fund  
 Siemer Family Foundation Fund  
 Westwood Fund  
 Sally W. Yanowitz Donor Advised Fund

Jane's Trust  
 The Kresge Foundation  
 Jerome & Mildred Paddock Foundation  
 Philanthropic Fund of the Jewish Federation of  
 Sarasota-Manatee  
     Toby Deutsch  
     Mrs. Marcia Fox  
     Hershorin Philanthropic Fund  
     Bartram & Joan Levenson Philanthropic Fund  
     Mr. & Mrs. Howard Lieb  
     Adrea & Jack Sukin Family Philanthropic Fund  
     Janet Tolbert  
     Wertheimer Philanthropic Fund  
 University of Maryland, Legacy Corps for Health &  
 Independent Living  
 Harry & Jeanette Weinberg Foundation

## GOVERNMENT

Area Agency on Aging for Southwest Florida, Inc.  
 Federal Emergency Management Agency (F.E.M.A.)  
 Florida Department of Children & Families/  
     Office on Homelessness  
 Florida Department of Elder Affairs

Florida Department of Juvenile Justice  
 Florida Department of Law Enforcement  
 Manatee County Government  
 Mayor's Feed the Hungry  
 Sarasota County Government Contracted  
 Human Services Program

School Board of Manatee County  
 School Board of Sarasota County  
 U.S. Department of Health & Human Services/  
     Administration for Children and Families

## JFCS VOLUNTEERS



Thanks to the commitment and dedication of our volunteers, JFCS is able to offer services that would otherwise be financially impossible. The time they give touches so many and truly makes a difference to those who seek our help. Our volunteers set the example of the true spirit of caring.

In 2010-2011, volunteers provided 11,479 hours of service to JFCS programs and services.

Please accept our apology if we missed you on this list of volunteers. If you did volunteer between June 1, 2010 and May 31, 2011 and your name is not listed, please contact us so we can properly acknowledge your efforts.

Gerri Aaron  
Rabbi Sol Agin  
Peggy Albano  
Marjorie Alberg  
Barbara Allen  
George Allison  
Diana Bater Anderson  
Scott Anderson  
Harriet Ansell  
Felicia Antolik  
Darlene Arbeit  
Jewel Ash  
Mike Ash  
Mikhail Avrasin  
Judy Barde  
Scott Barde  
Sharon Barger  
Marie Barr  
Barbara Barriere  
Colleen Baxter  
Betty Bell  
Nate Benderson  
Shaun Benderson  
Doris Benice  
Lee Berkowitz  
Bonnie Berman  
Barbara Bernstein  
Joel Bernstein  
Marshall Bernstein  
Mary Ann Bernstein  
Tom Bernstein  
Bob Billups  
Alice Birnbaum  
Sheila Birnbaum  
Kathy Black  
Robert Black  
Carol Bloom  
Richard Bloom  
Sylvia Bloom  
Alice Blueglass  
Richard Blumenthal  
Joel Blumsack  
John Boisvert

Barbara Boltuch  
Betsy Bommer  
Elizabeth Bornstein  
Rosemary Boroda  
Butch Bozarth  
Sue Bralow  
Fran Braverman  
Sylvia Browning  
Barbara Brizdle  
Thomas "Craig" Bryars  
Fern Buchler  
Mary Budd  
Elaine Budoff  
Frank Buffone  
Joan Burman  
Elinor Burstein  
Sandy Cadman  
Charles Cahn  
Judy Cahn  
Malcolm Candlish  
Greg Carlson  
Laura Carnevale  
Charles Carson  
Charlene Carstens  
Trona Carter  
Amanda Cattaneo  
Colleen Clark  
Sarah Cloud  
Laura "Toby" Cohen  
Norine Cohen  
Norma Cohen  
Sanford Cohen  
Sharon Cohen  
Melba Cohn  
Stanley Cohn\*  
Audrey Coleman  
Carlos Comacho  
Irwin Cooper  
James Corsica  
Dee Dee Cousins  
Warren Coville  
Rosalie Cruz  
Jack Dean

Nancy Christine Deans  
Nancy DeLoach  
Morris Dibner  
Pat Dinney  
Alexei Dinottis  
Ashley Doble  
Cloe Drapkin  
Marsha DuBryn  
Donna Dunio  
Mary Dunn  
James DuPlantier  
Larry Eger  
Joel Ehrenpreis  
Rosalynd Ehrenpreis  
Jim Eisberg  
Arnold Elliott  
Carol Elridge  
Esther Emmerman  
Lisa Emory  
Jeanne Epstein  
Ginger Evans  
Paula Falk  
Shirley Fein  
Irv Feins  
Lauren Fineman  
Sylvia Firschein\*  
Len Fishman  
Les Fishman  
Rosalynd Fleischer  
Bobbi Fleisher  
Sheila Fox  
Ilene Friedman  
Janice Friedman  
Jason Friedman  
Evelyn Garb  
Libby Garnitz  
Karen Gary  
Norman Gassman  
Donna Gaudreau  
Gloria Gayer  
Mary Ann Gentilella  
Dorothy Lee Gifford  
Nina Gitomer

Sandra Gladstone  
April Glasco  
Ruth Glazerman  
Harvey Gleeksman  
Sue Gleeksman  
Rabbi Brenner Glickman  
Rabbi Elaine Glickman  
Lorraine Glixon  
Shirley Glover  
Anne Glowacki  
Alice Gochberg  
Harvey Gochberg  
Alfred Golding  
Manny Goldman  
Marsha Goldsby  
Grace M. Goldstein  
Michael Goldstein  
Maxine Goodheim  
Louis Greco  
Misti Green  
Allison Greene  
Polly Greene  
Stephen Greene  
Betty Greenspan  
Suzanne Gregory  
Abbie Gross  
Ron Hamilton  
Jerry Hamovit  
Joelle Hamovit  
Terri Hansen  
Mark Hartke  
Marilyn Harwell  
Lael Hazan  
Hugh Helfenstein  
Esther Heller  
Linda Heller  
Allison Henley  
Jennifer Highland  
Betty Hillman  
Nancy Hobson  
Elinor Hogan  
Pamela Holmer  
Hannah Honeyman

Wendy Hopkins  
Lee Ann Horton  
Kathleen Houseweart  
Dan Huk  
Carol Hunt  
Marty Hurwitz  
Amanda Ivkovich  
Lindsay Jackson  
Mary Alice Jackson  
Dorothy Jacobson  
Frederika Jacobson  
Lyn Jacobson  
Sue Jacobson  
Becky Jaffer  
Cathy Jaffer  
Cat Janner  
William Jenkins  
Harold Joels  
Valerie Joels  
Linda Johnson  
Robert Johnson  
Charles Jones  
Sally Joselson  
Pauline Kabcenell  
Libbie Kaplan  
Sy Karpen  
Florence Katz  
Rabbi Jonathan Katz  
Lee Katz  
Rose Kaufman  
Charles Kaye  
Carole Kendal  
Tony Kendal  
Kathy Killion  
Hope Kinney  
Jamie Kirkell  
Ben Klein  
Gail Klein  
Pat Klugherz  
Katie Knight  
Shelly Kopel  
Rabbi Aaron Koplin  
Joan Koplin

# *makes a difference to those who seek our help*

Cecilia Korsen  
Vivian Kouvant  
Harriett Krass  
Sandra Krause  
Sharon Kunkel  
Sylvia Kupferman  
Diana Lager  
Gerry Lahn  
Fran Lambert  
Gracie Lamphere  
Susan Landau  
Ruth Lando  
Kathryn Larkin  
Marlene LaRose  
Sadie Rudman Laufer  
Shannon Leigh  
Frederick Leonard  
James LeTellier  
Clare Levin  
Bernard Levine  
Lee Levine  
Marion Levine  
Barb Levison  
Roz Levy  
Hal Lewis  
Lori Liner  
Sherry Linhart  
Reverend Jay Longacre  
Brenda Lopez  
Bobbi Lorry  
Darlene Loveday  
Harriet Lowengrub  
Phyllis Lowitt  
Barbara Lupoff  
Bertrum Lynn  
Carol MacPhee  
Art Mahoney  
Louise Majorey  
Randy Mallitz  
Susan Mallitz  
Marvin Mankowitz  
Celia Marion  
Ken Marsh

Donald Marshall  
Erica Marshall  
Audrey Marten  
Jody Maxwell  
Claire McCarthy  
Erin McCleod  
Mariel McCool  
Jon McKenzie  
Luciana Meadows  
Sandy Mehlenbacher  
Joe Mendels  
Ora Mendels  
Sue Michalow  
Steve Miles  
Peggy Miller  
Sanford Milter  
Rabbi Joel Mishkin  
Alisa Mitchell  
J Donald Monsky  
Marie Monsky  
Kerry Montalvo  
Evan Morgan  
Susan Morin  
Marilyn Naiditch  
Hazzan Diane Nathanson  
Nikki Nilon  
Sheila Nitzberg  
Rita Noyes  
Judy Oakes  
Marylen Oberman  
Janet O'Brien  
Terry O'Brien  
Ruth Orne  
Lesli Osterbrock  
Emily Walsh Parry  
Glenda Pasho  
Chaya Perera  
Chaplain Tom Pfaff  
Glenda Pinkston  
Norman Plotnick  
Pam Polowski  
Esther Pottischman  
Richard Pottischman

Katie Powers  
Tricia Prehn  
Barbara Pugliese  
Annette Rawlings  
Stanley Regenbogen  
Pam Reiter  
George Rendle  
Robin Richardson  
Elkan Ries, Jr.  
Estelle Ringer  
Delia Rios  
Robin Rogari  
Janet Romano  
Michelle Romano  
Barbara Rosen  
Elaine Rosen  
Jeanette Rosen  
Marvin Rosen  
Mary Rosen  
Linda Rosenbluth  
Robert Rosenbluth  
Annette Ross  
Roslyn Ross  
Velma Ross  
Margaret Rubinow  
Joan Rushforth  
Joan Sable  
Adriana Salazar  
Julie Salzman  
Martin Salzman  
Christopher Santiago  
Rose Saperstein  
Ed Schaye  
Molly Schechter  
Dorothy Schmidt  
Ina Schnell  
Betty Schoenbaum  
Larry Schoenberg  
Mary Beth Schrowang  
Barbara Schur  
Larry Schuster  
Fran Schwartz  
Stephen Seay

Cindy Seever  
Richard Segall  
Suzette Seigel  
David Selcer  
Adrea Seligsohn  
Leo Seligsohn  
Suki Sellinger  
Pamela Sennott  
Sarah Senter  
Ruth Shafer  
Rabbi Ari Shapiro  
April Sheffield  
Kim Sheintal  
Michael Shelton  
Helen Sherman  
Michael Shlifer  
David Shukovsky  
Alan Siegel  
Paula Siegel  
Ruth Siegel  
Susan Siegel  
Jean Simon  
Jennifer Singer  
Breona Siplin  
Sarah Skebba  
Stella Skuza  
Edna Smith  
Timothy Smith  
Kristen Sommers  
Mark Soss  
Judy Speciale  
Madelyn Spoll  
Dale Sprintz

Dolly Sprinz  
Brian Squitieri  
Tina Stager  
Rollie Stamm  
Margot Stanhope  
Jay Steele  
Sally Steele  
Shelley Stein  
Arline Steinberg  
Debbie Stekloff  
Myriam Stephens  
Roger Stephenson  
Kathy Stern  
Lori Stern  
Richard Stern  
Harry Stimmel  
Lois Stulberg  
Mariah Summerall  
Alice Taich  
Sylvan Tanner  
Jack Tate  
Mel Taub  
Lynn Teichman  
Howard Tevlowitz  
Olivia Thomas  
Yvette Thornton  
Marjorie Tick  
Alan Trachtenberg  
Joanne Trachtenberg  
Missy Trzeciak-Kerr  
Liberty Veedon  
Jack Vendeland

Jessica Ventimiglia  
Judy Vigder  
Robert Vigder  
Marvin Waldman  
Margot Wallace  
Thomas Walters  
Ann Wayne  
Kim Weaver  
Carolyn Webber  
Elizabeth Wechter  
Robert Weil  
Stanley Weisman  
JoAnn Westbrook  
Carol Westheimer  
Ira Wiesner  
Steve Wilberding  
Gayle Williams  
Lisa Willis  
James Wolfson  
Jeffrey Wolfson  
Toni Wolfson  
Bob Wyatt\*  
Sally Yanowitz  
Debbie Yonker  
Scott Young  
Harold Zabin  
Dodie Zehnwirth  
Harry Zehnwirth  
Dorothy Zenie  
Sheila Zinder  
Dori Zingmond

*\* Of Blessed Memory*

## **CONGRATULATIONS TO OUR 2010-2011 VOLUNTEERS OF THE YEAR**

**Marshall Bernstein  
Joel Blumsack  
Irwin Cooper  
Rosalyn Ehrenpreis  
Jeanne Epstein**

**Betty & Howard Isermann  
Kathy Killion  
Julie & Ron Milton  
Saralyn & Gene  
Oberdorfer**

**Rosalyn Ross  
Sarasota Bay Club  
Leo Seligsohn  
Ruth Siegel**

**BUILDING  
STRONG FAMILIES  
HOMELESSNESS  
PREVENTION**

OUTCOMES TO BE MEASURED	TARGET	RESULTS
Clients are satisfied with program services	90% of clients will indicate they are satisfied or very satisfied with program services	<b>100%</b>
Financial assistance, if needed, will be provided to prevent homelessness	90% of the financial assistance required based on the individualized plan will be provided by the fourth case management session with family	<b>100%</b>
Families will be provided with food and food vouchers to support their basic needs	100% of families will receive food and food vouchers to support their basic needs	<b>100%</b>
Families will be provided support by a trained professional as they address issues related to the prevention of homelessness	100% of families will be provided the support of a trained professional	<b>100%</b>

**SARASOTA  
CARES**

OUTCOMES TO BE MEASURED	TARGET	RESULTS
Caregivers will feel satisfied with the services they are receiving	85% of all enrolled caregivers will feel satisfied with the services they are receiving from JFCS	<b>93%</b>
Caregivers will feel their stress is reduced	75% of all enrolled caregivers will feel their stress is reduced as a result of services they are receiving from JFCS	<b>88%</b>
Caregivers will show improvement on the Quality of Life Scale	75% of enrolled caregivers will show improvement on the Quality of Life Scale	<b>79%</b>

**HEALTHY  
FAMILIES/  
HEALTHY  
CHILDREN**

OUTCOMES TO BE MEASURED	TARGET	RESULTS
Couples are learning how to cope with their relationship	85% of couples will show improved relationship coping skills	<b>97%</b>
Participants were treated with dignity and respect	85% of participants will indicate that they were treated with dignity and respect	<b>100%</b>
Family Coordinator provided assistance with finding community resources	85% of participants were satisfied with the services provided by their Family Coordinator	<b>99%</b>

OUTCOMES TO BE MEASURED	TARGET	RESULTS	JEWISH PROGRAMS
Survey of participants will indicate that they are satisfied with services received	80% of participants will indicate that they are satisfied with services received	100%	
Survey of volunteers will indicate that they are providing valuable services to the community	90% of volunteers will indicate that they are providing valuable services to the community	96%	
OUTCOMES TO BE MEASURED	TARGET	RESULTS	SCHOOL BASED PROGRAMS
Reduce the number of school disciplinary referrals of program youth who complete the program	75% of program youth who complete the program will receive no further disciplinary referrals	89%	
Parents and teachers will identify improvement in the youth's behavior	70% of parents and teachers will identify the youth's behavior as improved	81%	
Participating youth will identify an improvement in coping skills	85% of program youth will improve their coping skills	99%	
OUTCOMES TO BE MEASURED	TARGET	RESULTS	SENIOR SERVICES
Seniors will experience decreased feelings of depression	70% of all seniors will not have an increase in feelings of depression	84%	
Seniors will have new and increased knowledge of community resources	90% of seniors will have increased knowledge of community resources	100%	
Seniors will demonstrate an increase in social functioning	65% of seniors receiving case management and/or counseling will indicate improved social functioning	95%	
Seniors are satisfied with services provided by program	90% of participants will indicate they are satisfied or very satisfied with services provided	99%	

## DEMOGRAPHICS & FINANCIAL INFORMATION

### PROGRAM SERVICES

In 2010-2011, JFCS provided 76,390 services to the community through intake & referral, individual & group counseling, support groups, family life education, community outreach and client based supportive volunteer outreach.

### DIRECT SERVICES

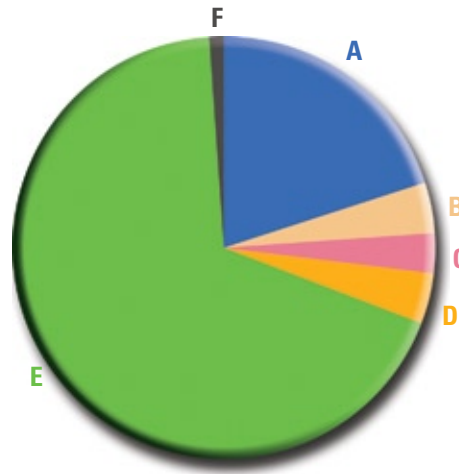
Through the provision of the following direct services:

- Counseling
- Youth
- Seniors
- Jewish Healing
- Intake
- Volunteers

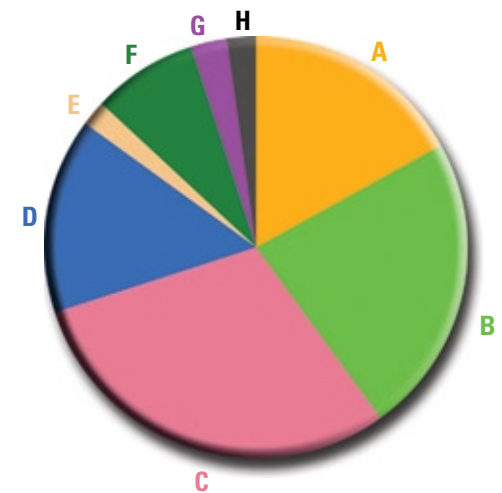
JFCS touched the lives of 21,969 children, families, adults and seniors.

## 2010-2011 JFCS OPERATING INCOME: \$ (100,185)

Unaudited Financial Information as of May 31, 2011. Audited Financial Statements Pending.



PUBLIC SUPPORT AND REVENUES		
(A) Contributions & Fundraising	\$1,228,054	20%
(B) Program Revenue	203,637	4%
(C) Jewish Federation of Sarasota-Manatee	132,008	3%
(D) United Ways	193,620	4%
(E) Grant Income	3,508,626	68%
(F) Other Revenue	59,995	1%
(G) Donor Restricted Programs	(563,565)	
<b>Total Revenue</b>	<b>\$4,762,375</b>	<b>100%</b>



TOTAL EXPENDITURES		
(A) School Programs	\$ 807,007	17%
(B) Counseling Services	1,123,364	23%
(C) Building Strong Families	1,410,171	29%
(D) Senior Services	742,690	15%
(E) Jewish Programs	164,445	3%
(F) Administration	383,444	8%
(G) Fundraising	136,285	3%
(H) Volunteers	95,155	2%
<b>Total Expenses</b>	<b>\$4,862,560</b>	<b>100%</b>



## FAMILY LIFE EDUCATION

More than 661 family life education workshops were provided to the community through area synagogues, civic groups and local businesses and corporations. Topics included: Parenting, Anger Management, Bereavement, and Marriage Enrichment. Number of participants: 11,770

## COMMUNITY OUTREACH

Volunteers provided more than 11,479 hours of service in the following capacities: serving as mentors and tutors to school-aged youth; assisting seniors during Senior Outreach Services group; providing one-to-one visitations to seniors residing in hospitals, nursing homes or living home alone, through telephone contact and personal visits; conducting religious services and festival celebrations held at congregate living facilities; providing spiritual support as a Bikkur Cholim Para-Chaplain; contributing mentor sessions to military

personnel and their family; providing community liaison and mentoring to adults recovering from addiction and substance abuse; serving as chaperones for participants in our differently disabled program; and providing clerical and administrative support to the agency. Number of volunteers: 440

*JFCS is a member agency of the Jewish Federation of Sarasota-Manatee and the United Ways of Manatee County, Sarasota County and South Sarasota County. Thanks to the generous support received from these local organizations, JFCS is able to serve the needs of individuals and families in our community. We encourage all of our friends to support the annual campaigns conducted by these organizations.*

## CLIENT PROFILE

### BY AGE

Under 18 years of age	19%
18 - 55 years old	44%
56 and older	37%

### BY GENDER

Male	45%
Female	55%

### BY MARITAL STATUS

Not specified	4%
Married	11%
Single	74%
Separated/Divorced	8%
Widow/Widower	3%

### BY GEOGRAPHIC AREA

Manatee County	24%
Sarasota County	76%
North Region	88%
South Region	12%

It is with sincere appreciation that we recognize these donors who have given so generously to support JFCS for the fiscal year 2010-2011. This list represents contributions received from donors through the Annual Friends Campaign, *Building for a Better Community* Capital Campaign, Endowment Campaign, Legacy Society, Mitzvah Tribute Cards, Special Events and designated donations received through area United Way Campaigns for the period of June 1, 2010 through May 31, 2011.

JFCS extends its thanks to those donors who wish to remain anonymous. If we have inadvertently omitted any individual, please accept our apologies and heartfelt thanks for your contribution. Please call Andria Bilan, Vice President of Development at 941-366-2224 with any corrections.

**VISIONARIES**  
**\$25,000 +**

Anonymous (1)  
Ms. Gerri Aaron  
Area Agency on Aging  
Nathan Benderson &  
Anne Virag  
Community Foundation of  
Sarasota County  
Mr. & Mrs. Warren J. Coville  
FEMA  
Mr. & Mrs. Louis Flanzer  
Mrs. Beatrice Friedman  
Alfred & Ann Goldstein  
Foundation  
Mr. & Mrs. Jerome E.  
Goldstein  
Gulf Coast Community  
Foundation  
Isermann Family Foundation  
Jane's Trust  
Jewish Federation of  
Sarasota-Manatee  
KBR Foundation  
Kresge Foundation  
Mr. & Mrs. Ernest Kretzmer  
Manatee County Government

Mr. & Mrs. Rudy Markowitz  
Mr. & Mrs. Gene Oberdorfer  
Sarasota County Government  
Sarasota County Health &  
Human Services  
Mrs. Betty Schoenbaum  
School Board of Sarasota  
County  
Mrs. Fran Schwartz  
Seimer Family Foundation  
Dr. & Mrs. Louis Siegel  
Suncoast Partnership to End  
Homelessness  
Suncoast Workforce Board  
United Way of Manatee  
County  
United Way of Sarasota  
County  
Estate of Emmanuel Val  
Verde  
The Harry & Jeanette  
Weinberg Foundation  
Mrs. Sally Yanowitz

**PRESIDENT'S CIRCLE**  
**\$10,000 – 24,999**  
Anonymous (2)

Mrs. Leah Barker  
Mrs. Alice Berkowitz  
Mr. Edward Brickman  
Barbara Brizdle & Larry  
Schoenberg  
Mr. & Mrs. Robert Cahn  
Mr. & Mrs. Malcolm Candlish  
The Margaret A. Cargill  
Foundation  
Mrs. Sylvia Cohodas  
Mr. Gershom Cohn  
Comcast  
Florida Department of  
Juvenile Justice  
Mr. Ralph Franklin  
Mrs. Charlotte P. Graver  
Mr. & Mrs. Arnold Hoffmann  
Mr. & Mrs. Harold Joels  
Ms. Eve R. Kommel  
Mayors Feed the Hungry  
Dr. & Mrs. Joseph Mendels  
Mr. & Mrs. J Donald Monsky  
Jerome & Mildred Paddock  
Foundation  
Sarasota Family YMCA  
Mr. & Mrs. Richard Segall  
Mrs. Anna Mae Seemeyer

Mr. & Mrs. Raymond Swart  
United Way of South  
Sarasota County  
Ms. Gloria Weissberg  
Wilson-Wood Foundation

**LEADERSHIP CIRCLE**  
**\$5,000- 9,999**

Anonymous (2)  
Alliance for Children &  
Families  
Mr. & Mrs. Charles Barancik  
Mr. & Mrs. Jerry Camens  
Mr. & Mrs. James Cornetet  
Ms. Claudia Coville  
Design Marketing Group, Inc.  
Mr. & Mrs. Bernard Friedland  
Mr. & Mrs. Harvey  
Gleeksman  
Gulfcoast South AHEC  
Harris Private Bank  
Dr. & Mrs. Curtis Hecht  
Arthur S. Karp Family  
Foundation  
Kathy Killion & Dr. Stephen  
Miles  
Mr. & Mrs. Benjamin Krause

Dr. Diana Lager  
Libby's Café & Bar  
Mrs. Barbara J. Lupoff  
Mr. & Mrs. Randy Mallitz  
Mr. & Mrs. Howard Mankoff  
Mr. & Mrs. Jerry Margolis  
Mr. & Mrs. Irving Naiditch  
Mr. & Mrs. Norman Reiter  
Mrs. Ruth G. Rolfe  
Mr. & Mrs. Jules Rose  
Sarasota Bay Club  
Sarasota Orchestra  
SCENE Magazine  
School Board of Manatee  
County  
Mr. & Mrs. Leo Seligsohn  
Mr. & Mrs. Morton Siegler  
Dr. Alan Turow  
University of Maryland,  
Legacy Corps for Health &  
Independent Living  
Ms. Dorothy Waldron  
Mr. & Mrs. David Weiss  
Mr. & Mrs. Ronald Yonover  
Mr. & Mrs. Frank Zenie



# THANK YOU!

2010-2011 DONORS

## AMBASSADORS

\$2,500 – 4,999

Anonymous (2)  
George Allison & Alan Watkins  
Mike & Jewel Ash  
Mrs. Liese Lee Berkowitz  
Mr. & Mrs. Thomas Bernstein  
Ms. Theda Bohrer  
Mr. & Mrs. Albert Cohen  
Ms. Lynn Coville  
Mr. Gerard Daniel  
Ms. Debbie Land Dannheisser  
DreamWeaver Collection  
Ms. Susan Dweck  
Mr. & Mrs. Herman Frankel  
Stacey & Jody Gillman  
Healthy Start Coalition  
Mr. Marvin Kadesh  
Dr. & Mrs. Bernard Levine  
Mr. & Mrs. Saul Lowitt  
Mr. & Mrs. Dennis  
McGillicuddy  
Mrs. Joan Mendell  
Sanford Milter & Helen  
Sherman  
Julie & Ron Milton  
The Ritz-Carlton, Sarasota  
The Rubin Charitable  
Foundation  
Mr. & Mrs. Burton Sack  
Tillie, Jennie & Harold  
Schwartz Foundation  
Mr. & Mrs. David Shukovsky  
Mr. & Mrs. Irving Shuman  
Mr. & Mrs. Fred Taich  
Mr. & Mrs. Robert Vigder

## SUSTAINER

\$1,000 - 2,499

Anonymous (1)  
Mr. & Mrs. Alan Ades  
Advocates in Aging  
Mr. & Mrs. Doug Allen  
Suzanne & Robert Atwell  
Mr. & Mrs. Bruce Bachmann  
Mr. Martin Bader  
Mr. & Mrs. Robert Baer  
Mr. & Mrs. Gerald Bamberger  
Mr. & Mrs. David Band  
Ms. Marie Barr  
Mr. & Mrs. David Bavar  
Mr. & Mrs. Irving Bennett  
Mr. & Mrs. Harry Bernbaum  
Mr. & Mrs. Robert Bernhard  
Elayne Bernstein & Sol  
Schwartz  
Mr. & Mrs. Marshall Bernstein  
Mr. & Mrs. Simon Bernstein  
Mr. & Mrs. Robert Biller  
Mr. & Mrs. Morton Bloch  
Dr. Fred Bloom & Susan Rosin  
Mr. & Mrs. John Blume  
Mr. & Mrs. Richard Blumenthal  
Drs. Philip & Susan Bralow  
Mr. & Mrs. Sam Brott  
Carol B. Camiener & Jim  
Herrington  
Mr. & Mrs. David Chaifetz  
Rose & Bob Chapman  
Mr. & Mrs. Willard Cohodas  
Ms. Ashley Curtidor  
Mrs. Jean DeLynn  
Mrs. Shirley Dinkin  
Larry Eger & Susan Burns

Joel & Rosalyn Ehrenpreis  
Mrs. Ruth Engman  
Mrs. Shirley Fein  
Mr. & Mrs. Martin Fine  
Mr. & Mrs. Len Fishman  
Mr. & Mrs. Les Fishman  
Mrs. Marcia Fox  
Mr. & Mrs. Kenneth G. Fradin  
Ilene Friedman & Greg Gregory  
Mr. & Mrs. Robert Garner  
Ms. Barbara Geldbart  
Joann George & Jerry Swartz  
Dr. Phyllis Gerber  
Mrs. Grace M. Goldstein  
Mr. & Mrs. Samuel Gourse  
Jules & Carol B. Green  
Mr. & Mrs. Merle Greenwald  
Mr. & Mrs. Jerry Hamovit  
Dr. & Mrs. Lewis Hanan  
Ms. Marilyn Harwell  
Dr. & Mrs. Larry Haspel  
Dr. Jack Hazan  
Mr. & Mrs. Martin Heller  
Mr. & Mrs. Robert Heller  
Mr. Bernard Isaacs  
Mrs. Dorothy Jacobson  
Ms. Sue A. Jacobson  
Mr. & Mrs. Jack Jost  
Mr. & Mrs. Gerald Kaplan  
Harry Kartzog & Renee Sheade  
Kates Foundation  
Mrs. Florence Katz  
Mr. & Mrs. Marvin Kaulkin  
Kirk-Pinkerton, P.A.  
Mr. & Mrs. Benjamin Klein  
Nicci Kobritz, Youthful Aging  
Mr. & Mrs. Robert Kramer

Mr. & Mrs. David Lambert  
Mr. & Mrs. Leonard Landau  
Dr. Joseph & Esther Landin  
Memorial Fund  
Mr. & Mrs. Harry Leopold  
Lerner Cohen Healthcare  
Dr. & Mrs. Bartram Levenson  
Mrs. Lee Levine  
Dr. & Mrs. Gerhard Levy  
Mr. & Mrs. Louis Levy  
Mr. & Mrs. Milford T. Lewis  
Mr. & Mrs. Howard Lieb  
Mrs. Betty Lindenberger  
Mr. & Mrs. David Linder  
Mr. & Mrs. Larry R. Linhart  
Dr. & Mrs. Gerald Litzky  
Mr. & Mrs. Julius M. Loeser  
Mr. & Mrs. Wilfred Lorry  
Mr. & Mrs. Gerald Lublin  
Mr. & Mrs. Milton Lucow  
Ken Marsh & Tanice Knopp  
Mr. & Mrs. Marty McKee  
Ms. Barbara McSweeney  
Mrs. Betty Menell  
Mr. & Mrs. Michael Mesirov  
Mrs. Gloria Moss  
Mr. & Mrs. Leonard Nathanson  
Rev. & Mrs. Jim Nilon  
Northern Trust Bank  
Marshall I. Nurenberg &  
Joanne Klein  
Mr. & Mrs. Irwin Pastor  
Mr. & Mrs. John Patterson, Jr.  
Mr. & Mrs. Stanley Pelletz  
Ms. Iris Perkins  
Mr. & Mrs. Alan Pervil  
The Player's Theatre

PNC Bank  
Mrs. Revella Price  
Publix Super Markets Charities  
Mr. & Mrs. James Pullen  
Mr. Sidney Robbins  
Mrs. Flori Roberts  
Mr. & Mrs. Ralph Roberts  
Mrs. Mary Ann Robinson  
Mr. & Mrs. Charles Rosen  
Dr. & Mrs. Robert Rosenbluth  
Dr. Bernard Rothschild  
Mr. & Mrs. Stan Rutstein  
Mr. & Mrs. Norman G. Samet  
Sarasota Family YMCA  
Mr. & Mrs. Edward Schaye  
Ms. Molly Schechter  
Mrs. Betty T. Schiff  
Ms. Ina Schnell  
Richard Seidel & Anita  
Rosenblum  
Mr. & Mrs. Jerome Seigel  
Mr. Michael Shelton  
Mr. & Mrs. Frank Shewer  
Mr. & Mrs. Noel D. Siegel  
Mr. & Mrs. Ira Singer  
Mrs. Mildred Stein  
Shelley Stein & Michael  
Lacroix  
Mr. & Mrs. Alan Stone  
David & Lois Stulberg  
Foundation, Inc.  
SunTrust Banks  
Mr. Sylvan Tanner  
Dr. & Mrs. Jack Tate  
Temple Beth Israel  
Temple Beth Shalom  
Temple Emanu-El

Mrs. Bernice Thomas  
Ms. Marjorie Tick  
Ms. Janet Tolbert  
Mr. & Mrs. Terry Turner  
UBS Wealth Management  
USF Sarasota-Manatee  
Venice Golf & Country Club  
Fund  
Mr. & Mrs. William Weed  
Mr. & Mrs. Donald Weill  
Dr. & Mrs. Norman Weinberg  
Mr. & Mrs. Bruce Wertheimer  
Mr. & Mrs. Ira S. Wiesner  
Stephen Wilberding & Teri  
Hansen  
Mr. & Mrs. Merrill Wynne  
Ms. Alexandra Ziegler  
Mr. & Mrs. Merrill Zinder

## BENEFACTOR

\$500 – 999

Anonymous (2)  
Mr. & Mrs. Ira Abrahamson  
Mr. Marvin Albert  
Mrs. Lillian Alpert  
Mrs. Lenore Benderly  
Ms. Eileen Dunn Berger  
Mr. & Mrs. Lew Berman  
Mr. & Mrs. Michael Bernstein  
Beth Israel Women  
Andria Keil Bilan  
Annette & Marvin Black  
Bruce Black & Dr. Susan Marks  
Mrs. Phyllis Blenner  
Mrs. Barbara Blumfield  
Abby & Michael Brodie  
Mrs. Marie Brown

Harriet & Raymond Brush  
Foundation  
Congregation Ner Tamid  
Dr. Betsy Coville  
Mr. & Mrs. Robert Coyne  
Ms. Sharon Cramer  
Ms. Bernice Davis  
Mrs. Toby Deutsch  
Ms. Mimi Edlin  
The Feinstein Foundation  
First Baptist Church of  
Sarasota  
Ms. Barbara Fleisher  
Dr. & Mrs. Norman Foxman  
Mr. & Mrs. John Frank  
Mr. Lawrence Frank  
Ms. Jacqueline Frascella  
Mr. & Mrs. William Friedman  
Shirlye\* & Morris Goodfriend

Dr. & Mrs. Franklin Gould  
Ms. Lois B. Green\*  
Dr. Dean Hautamaki  
Healthy Start Coalition  
Mrs. Hannah F. Honeyman  
Mr. & Mrs. Merrill Hoyt  
Drs. Kenneth & Wendy Hurwitz  
Judith\* & Sanford Huston  
Ms. Janet Hyman  
Ms. Elaine Izaks  
Dr. Mohinder Jain  
Mrs. Doris Kaplan  
Rabbi Jonathan & Marty Katz  
Mr. Philip King  
Ms. Renate Kirshenbaum  
Mr. & Mrs. Robert Kupferman  
Mrs. Florence Levitt  
Ms. Ina Rae Levy  
Ms. Cheryl Loeffler

Dr. & Mrs. Marc Loundy  
Ms. Gerda Maceikonis  
Ms. Ilse Mack  
Ms. Gwen MacKenzie  
Mrs. Flori Major  
Ms. Audrey Marten  
Mrs. Lillian Meckler  
Mrs. Beatrice Michaels  
Mr. & Mrs. Alan Milbauer  
Mr. Frederick Miller  
Mr. Irving Mishkin  
Morton's Market  
Mr. & Mrs. Rick Nassau  
Ms. Sheila Nitzberg  
Dr. Marylen Oberman  
Mr. & Mrs. Mitch Olan  
Mr. & Mrs. Richard Olin  
Mrs. Ruth Orne  
Mrs. Ursula Pearson

Mr. & Mrs. Richard Ratner  
Martin D. & Barbara H. Rich  
Family Charitable Foundation  
Ms. Lynne Robbins  
Mr. Harold Ronson  
Hugo Roth Family Fund,  
Marsha Roth &  
Rebecca Roth  
Mrs. Marjorie Coons Sagman  
Mr. & Mrs. William Sandy  
Ms. Sharon Schreiber  
Mrs. Bernice Schwartz  
Mr. & Mrs. Gerald Seigel  
Mr. Alan Siegel  
Mrs. Theresa Sinick  
Snyder Family Foundation  
Ms. Marilyn Spencer  
Mr. & Mrs. Stuart Spivack  
Mr. & Mrs. Harvey Steinberg  
Mrs. Dorothy Stevens  
Mr. Dennis Stover  
Sweet Tomatoes  
Dr. Abraham Telen  
Temple Sinai  
Mr. Harold Tick  
Too Jay's Gourmet Deli  
Mr. & Mrs. Brent Triest  
Mr. & Mrs. Bruce Udell  
Mr. & Mrs. Matthew Walsh  
Women of Sinai  
Mr. & Mrs. Jack Yonker  
Mrs. Florence Zox

**SPONSOR**  
**\$250 – 499**

Anonymous (2)  
Dr. & Mrs. Ronald Anthonie  
Rich & Rebecca Bergman

Mr. & Mrs. Robert Bernard  
Mr. & Mrs. Donald Bernstein  
Mrs. Alice Birnbaum  
Mr. & Mrs. Murray Blueglass  
Betsy & Mike Bommer  
Mr. & Mrs. David Brause  
Dr. & Mrs. Richard Brown  
Ms. Saint Cacchiotti  
Mr. & Mrs. Tim Callahan  
Ms. Margaret Callihan  
Ms. Johnette Cappadona  
Mr. Fredrick Childs  
Mr. & Mrs. Bernard Cohen  
Comerica Bank  
Congregation for Humanistic  
Judaism  
Congregation Kol Ha Neshama  
Mr. & Mrs. Leon Cooper  
Cove Cleaners  
Mrs. Ruth E. DeLynn  
Mr. & Mrs. Doug Domino  
Mr. & Mrs. Harry Eisenberg  
Mrs. Barbara Elkind  
Mr. & Mrs. Leon Ellin  
Mr. Pasquale Esposito  
Family Jeweler of Manasota  
Ms. Moreen Fand  
Mr. & Mrs. Ken Fardie  
Dr. & Mrs. Burt Finkelstein  
Ms. Joan Frankel & Mr.  
Howard Mullin  
Mr. & Mrs. Barry Gaberman  
Mr. Robert Gaines  
Mrs. Corrine Garber\*  
Mr. & Mrs. Herbert B. Gofman  
Mrs. Bernice Goodman  
Mr. & Mrs. Philip Gorelick

Mrs. Arlene Hamburger  
Ms. Barbara Harrison  
Mr. & Mrs. Hugh Helfenstein  
Ms. Linda Heller  
Herald Tribune Media Group  
Mr. & Mrs. Richard Hershorn  
Ms. Pamela Holmer  
Mr. & Mrs. Steve Jablo  
Mrs. Lyn Jacobson  
Mr. & Mrs. Albert Kaplan  
Mr. & Mrs. Irwin Kaplan  
Dr. & Mrs. Bernard Katz  
Ms. Alina Klein  
Rabbi & Mrs. Aaron Koplin  
Mr. & Mrs. Phillip Kotler  
Ms. Wendy Kulscar  
Mr. & Mrs. Jim Lapides  
Mr. & Mrs. Ellis Lasberg  
Mr. & Mrs. Joshua Leuchter  
Mr. Daniel Levine  
Mr. & Mrs. Richard Levine  
Mrs. Elaine Lewin  
Ms. Kelly Liebel  
Mr. & Mrs. Alan Loring  
Mr. & Mrs. Jerome Lowengrub  
Ms. Joan Lyon  
Craig & Michelle Mallitz  
Mr. & Mrs. Dan Miller  
Ms. Susan Morin  
Mr. & Mrs. Stephen Musco  
Mr. & Mrs. Robert Nagel  
Ms. Joan Nixon  
Dr. & Mrs. Alan Persky  
Mr. Anton Raff  
Mr. & Mrs. Richard Reiman  
Mr. & Mrs. Fred Richman  
Mr. & Mrs. Tod Roberts



# THANK YOU!

2010-2011 DONORS

Mr. Andrew Rosen  
 Mr. John Rothberg  
 Mr. & Mrs. Harvey Rothenberg  
 Mrs. Ruth Rothschild  
 Nancy & Jerry Roucher  
 Mr. & Mrs. Samuel Rubinovitz  
 Ms. Margaret Rubinov  
 Mr. & Mrs. Barnet Sack  
 Mr. & Mrs. Jonathan Saperstein  
 Mr. & Mrs. Larry Schuster  
 Mrs. Marilyn Schwartz  
 Mrs. Sara Sellinger  
 Mr. & Mrs. Jordan Shifrin  
 Ms. Stella Skuza  
 Southern Aluminum  
 Jack Steenbarger & Susan Molnar  
 Dr. & Mrs. Julius Stone  
 Mr. & Mrs. Jack Sukin  
 Mr. Antonios Tjamalouka  
 Sally A. Trout Interior Design  
 Drs. David Vigder & Diany Morales  
 Mr. George Volinn  
 Mr. & Mrs. Thomas Walker  
 Mr. James Weinberg  
 Mr. & Mrs. Jeffrey Weitzen  
 Mr. & Mrs. Peter Wells  
 Mr. & Mrs. Sherwin Welson  
 Mr. & Mrs. David Wertheimer  
 Ms. Ida Wilkof  
 Mr. & Mrs. Robert Wolfe

**PATRON**  
**\$100 – 249**

Anonymous (3)  
 Mr. & Mrs. Zack Abuza

Mr. & Mrs. Charles Ackerman  
 Mrs. Hattie Albert  
 Mr. & Mrs. Robert Albert  
 Dr. & Mrs. Vlad Alexander  
 Mr. Scott Anderson  
 Ms. Darlene Arbeit  
 Mr. Oscar Arny  
 Mr. & Mrs. James Aronson  
 Uzi Baram & Amy Reid  
 Mr. & Mrs. George Bardos  
 Dr. Lois Barson  
 Mr. & Mrs. Cliff Bart  
 Ms. Rita Barth  
 Mr. & Mrs. Barry Benjamin  
 Ms. Katherine Bernal  
 Mr. & Mrs. Tom Bernstein  
 Ms. Velma Bernstein  
 Ms. Sheila Birnbaum  
 Alison & William Bishop  
 Mr. & Mrs. Albert Black  
 Mr. & Mrs. Robert Black  
 Ms. Lucia Blinn  
 Mr. & Mrs. Joel Blumsack  
 Mr. & Mrs. Harvey Bocian  
 Ms. Susan Brainerd  
 Mr. & Mrs. Mel Braude  
 Dr. & Mrs. Robert Brenner  
 Mrs. Ruth Bressler  
 Mr. & Mrs. Albert Bronstein  
 Ms. Shirley Brown  
 Mrs. Sunny Brownrout  
 Ms. Gayle Byerly  
 Ms. Carolyn Byers  
 Mr. Tim Cameresi  
 Ms. Stephanie Carroll  
 Mrs. Charlene Carstens  
 Ms. Aundria Castleberry

Ms. Amanda Cattaneo  
 Chabad of West Palm Beach  
 Ms. Jan Chester  
 Mr. & Mrs. Michael Chisling  
 City of North Port  
 Ms. Carol Cohen  
 Ms. Elinor Cohen  
 Ms. Bette Cohn  
 Mr. & Mrs. William Coleman  
 Mr. & Mrs. Sherman Cooper  
 Ms. Norma Costa  
 Covenant Life Church of Sarasota  
 Ms. Renee Crames  
 Ms. Estelle Crawford  
 Ms. Judy Cuppy  
 Mr. & Mrs. Julius Deren  
 Mr. & Mrs. Robert Diamant  
 Dick's Sporting Goods  
 Mr. & Mrs. Harlan Domber  
 Ms. Marian Drost  
 Ms. Melanie Eckstein  
 Mr. & Mrs. Gary Eisenberg  
 Rabbi & Mrs. Michael Eisenstat  
 Ms. Rosalind Ellerbee  
 Mr. Arnold Elliott  
 Mr. & Mrs. Ernest Ellison  
 Mrs. Jeanne S. Epstein  
 Ms. Andrea Esposito  
 Ms. Helen Ettinger  
 Mr. & Mrs. Charles Ewing  
 Mr. & Mrs. Joel Fedder  
 Mrs. Joan Feder  
 Mr. & Mrs. Joel Feidelman  
 Mr. & Mrs. Irvin Feins  
 Ms. Judith Nelson Feldman

Mr. & Mrs. Alan B. Fendrick  
 Lauren & Dr. Steven Fineman  
 Mr. & Mrs. Frank Fineshriber  
 Mr. John Fischer  
 Mr. Thomas S. Fox  
 Mr. & Mrs. Michael Fradkin  
 Mr. & Mrs. Albie Frank  
 Dr. & Mrs. Marvin Frank  
 Mr. & Mrs. Mark Freed  
 Mr. & Mrs. Stan Friedlander  
 Mr. & Mrs. Carl Friedman  
 Mr. & Mrs. Marshall Friedman  
 Mr. Morton Friedman  
 G. Fried Flooring America  
 Mr. Robert Garvin  
 Mr. & Mrs. Robert Gary  
 Mr. & Mrs. Larry Gavens  
 Mr. Sheldon Gensler  
 Mr. & Mrs. Gary Gitomer  
 Mr. Gary Gladhill  
 Ms. Leslie Glass  
 Rabbis Brenner & Elaine Glickman  
 Dr. & Mrs. Sheldon Glickman  
 Mr. & Mrs. Paul Glosser  
 Mr. & Mrs. Murray Goldberg  
 Rosalie Goldberg & Alan Bandler  
 Mr. & Mrs. Sy Goldblatt  
 Mr. & Mrs. Richard Golden  
 Mr. & Mrs. Sheldon Goldklang  
 Dr. David Goldstein  
 Ms. Shana Goodman  
 Mr. & Mrs. Howard Gordon  
 Ms. Doreen Gouveia  
 Ms. Karin Grablin  
 Mr. James Grace



Mr. & Mrs. Jimmy Granite  
 Dr. & Mrs. Joshua Green  
 Mr. & Mrs. Thomas Green  
 Dr. & Mrs. Richard J. Greenspan  
 Ms. Karen Grierson  
 Ms. Annette Grishman  
 Mrs. Ethel Gross  
 Karen Haag & Randall Pisetzky  
 Mr. & Mrs. Ben Hanan  
 Ms. Carol Ann Hallinger  
 Mr. & Mrs. Lee D. Harrison  
 Ms. Sarah Hartley  
 Mrs. Beatrice Hartzband  
 Mr. & Mrs. Stan Hendel  
 Mr. Todd Hoch  
 Mr. & Mrs. Jack Holdstein  
 Mr. & Mrs. Moshe Horowitz  
 Ms. Lynn Hudgins  
 Mr. & Mrs. Palmer Hughes  
 Dr. & Mrs. Joseph Jacobson  
 Ms. Kim Jeanes

Dr. Susan Johnson  
 Mr. Anthony Joseph  
 Mr. & Mrs. Murray Kanetsky  
 Mr. & Mrs. Herbert Kanter  
 Mr. & Mrs. Arthur Karafin  
 Mr. Seymour Karpen  
 Mrs. Gertrude Kasler  
 Miss Emma Katz  
 Mr. Stephen Katz  
 Dr. & Mrs. Mark Kauffman  
 Mr. Donald J. Kayton  
 Mr. & Mrs. Frank Kenny  
 Ms. Ernie A. Kent  
 Mr. Leonard Kessler  
 Mr. & Mrs. Jerome Klein  
 Mr. Kerry Kleppinger  
 Ms. Patricia Klugherz  
 Mrs. Evelyn Koshner  
 Ms. Iris LaJoie  
 Mr. Alan Langford  
 Mr. & Mrs. Jason Lanzetta  
 Mrs. Sophia LaRusso



Mr. & Mrs. Irwin Leibowitz  
 Mr. & Mrs. Stuart Levin  
 Dr. & Mrs. Howard Levine  
 Mr. Harold Lewis  
 Mr. & Mrs. Horace Liberman  
 Ms. Marjorie Lieberman  
 Mr. Jeremy Lisitza  
 Ms. Caren Lobo  
 Mrs. Rise Loshack  
 Mrs. Claire Love  
 Mr. & Mrs. Michael Lovell  
 Mr. & Mrs. Andrew Maass  
 Dr. & Mrs. Sanford Mackman  
 Mr. & Mrs. Arnold Malasky  
 Mr. & Mrs. David Mallitz  
 Mr. & Mrs. Morton Mandle  
 Mr. & Mrs. Howard Markus  
 Mr. & Mrs. Henry Mason  
 Mr. & Mrs. Miles McAlister  
 Dr. Lou Bertha McKenzie-Wharton  
 Mr. & Mrs. Jack Michelson  
 Mr. Robert Z. Midler

Ms. Barbara Miller  
 Mr. & Mrs. Robert Monnin  
 Mr. & Mrs. Glen Moore  
 Dr. & Mrs. Herbert Moss  
 Mr. & Mrs. Robert Munzer  
 Mr. & Mrs. Barry Napshin  
 Mr. & Mrs. Van Neeley  
 Mrs. Donna Newman  
 Dr. & Mrs. Kenneth Newmark  
 Ms. Terri Noyes  
 Ms. Charlotte Paley  
 Dr. Sarah Pappas  
 Ms. Joan Paru  
 Ms. Corky Paston  
 Ms. Katie Patterson  
 Paver Family Foundation  
 Mr. & Mrs. Ira Peterman  
 Mr. & Mrs. Jacob Pollack  
 Mr. Jonathon Powers  
 Mr. & Mrs. Saul Putterman  
 Ms. Alex Quarles  
 Mr. & Mrs. Larry Rabinowitz  
 Mrs. Arlene Rakitt

Mr. & Mrs. Ray Rakoff  
 Mrs. Ginny Reck  
 Mr. Stanley Regenbogen  
 Mr. Mack Reid  
 Mr. & Mrs. Elkan Ries, Jr.  
 Mr. & Mrs. Barry Robbins  
 Mr. & Mrs. Bert Rosen  
 Mrs. Vera Rosen  
 Mrs. Bernice Rosenberg  
 Ms. Anita Rosenblum  
 Mr. & Mrs. Conrad Ross  
 Mrs. Frances Ross  
 Mr. & Mrs. Melvin Ross  
 Mr. & Mrs. Jay Sacks  
 Mr. Samuel Salkin  
 Dr. & Mrs. Jose Sambursky  
 Mr. & Mrs. Joseph Sander  
 Mr. & Mrs. Arnold Sandler  
 Ms. Betty Sandler  
 Mrs. Rose Saperstein  
 Sarasota Ballet  
 Mr. & Mrs. Laurence Saslaw  
 Mr. Robert Saunders  
 Mr. & Mrs. Alvin Saxonberg  
 Mr. & Mrs. Jim Schachter  
 Ms. Norma Schatz  
 Mr. Franz Schneider  
 Mr. & Mrs. Allan Schreiber  
 Mr. & Mrs. Edwin Schreiber  
 Mr. & Mrs. Harold Schwartz  
 Mr. Sam Seager  
 Mr. & Mrs. Murray Seitman  
 Mr. & Mrs. Bernard Seligman  
 Ms. Jeanne Shay  
 Mr. & Mrs. Ronald C. Sheff  
 Mrs. Beatrice Shepard\*  
 Mr. & Mrs. Michael Shlifer

Ms. Alice Shwom  
 Mr. & Mrs. Stanley Siegel  
 Mr. & Mrs. Howard Silver  
 Mr. & Mrs. Alan Silverglat  
 Dr. Ted Simon  
 Mr. & Mrs. Morton Skirboll  
 Ms. Eva Slane  
 Mrs. Audrey Spak  
 Mr. & Mrs. Bob Spitzer  
 Mr. & Mrs. George Spoll  
 Ms. Barbara Staton  
 Ms. Debra Stekloff  
 Mr. & Mrs. Alan Stone  
 Mr. & Mrs. Morton Stone  
 Mr. & Mrs. Martin Strobel  
 Mrs. Barbara Struth  
 Mrs. JoAnn Tomer  
 Mr. & Mrs. Howard Veit  
 Mr. & Mrs. Mayer Wainstein  
 Mr. & Mrs. Daniel Weber  
 Mr. Thomas Weil  
 Mr. & Mrs. Stanley Weisman  
 Drs. Catherine Wheeler & Andrew Kemper  
 Mr. & Mrs. Bernard White  
 Mrs. Gertrude Wiederhorn  
 Mr. & Mrs. Edward Winnick  
 Mr. & Mrs. Blair Wolfson  
 Mrs. Timi Wolov  
 Stanley Yudin & Linda Charnes

#### CONTRIBUTOR \$50 - 99

Anonymous (3)  
 Ms. Linda Abramson  
 Ms. Louise Agee  
 Mr. Eugene N. Agins  
 Ms. Linda Albert

Ms. Yvonne Alverio  
 Ms. Zoe Anderson  
 Mrs. Harriet Ansell  
 Mrs. Celia Assiran  
 Ms. Denise Barker  
 Pamela Baron & Art Mahoney  
 Mr. & Mrs. Jack Baumring  
 Ms. Heidi Becker  
 Mr. & Mrs. Ronald Bellamy  
 Beneva Flowers  
 Mr. & Mrs. Paul Benz  
 Ms. Anna Bergenstrahle  
 Mrs. Adelle Bernard  
 Mr. & Mrs. Chip Bettler  
 Ms. Elizabeth Black  
 Mr. Mark Black  
 Mr. & Mrs. Albert Blank  
 Stacey Bloom  
 Mr. & Mrs. David Blum  
 Mr. & Mrs. Richard Boari  
 Ms. Arlene Bobrow  
 Ms. Elaine Bowers  
 Mrs. Freda Bradley  
 Ms. Chris Brady  
 Ms. Elca Branman  
 Ms. Madeline Brogan  
 Dr. & Mrs. Stanley Brown  
 Mr. Thomas Bryars  
 Mr. Herbert Buckman  
 Dr. & Mrs. Ronald Burde  
 Mr. R. David Bustard  
 Ms. Carol Butera  
 Mr. Dennis Campagnone  
 Ms. Weta Cannon  
 Ms. Karen Carpenter  
 Ms. Kathryn Carr  
 Ms. Lois Chernoff

Ms. LaDonna Cloud  
 Mr. & Mrs. Paul Cohan  
 Ms. Elinor Cohen  
 Ms. Esther Cohen  
 Mr. & Mrs. Irwin Cooper  
 Ms. Toby Cosin  
 Ms. Alice Cotman  
 Mr. Skip Coville  
 Mr. & Mrs. Russell Cramer  
 Mrs. Eileen Curd  
 Ms. Jeannette D'Angelo  
 Mrs. Mary Dailey  
 Mrs. Sandra Day  
 Mr. Larry Dieringer  
 Mr. & Mrs. Steve Dvoskin  
 Education Foundation of Sarasota County  
 Ms. Amy Eliezer  
 Dr. Connie Ellis  
 Mr. Donald Epstein  
 Ms. Joyce Falke  
 Aileen Farber & Frank Levine  
 Fast Frames of Sarasota  
 Mr. & Mrs. Ernest Feldman  
 Mr. Howard Finkel  
 Mr. & Mrs. David Finkelstein  
 Mrs. Sylvia Firschein\*  
 Ms. Betty Foster  
 Ms. Kathy Francoletti  
 Ms. Belinda Funkhouser  
 Mr. & Mrs. Larry Garberding  
 Mr. & Mrs. Herbert Gardner  
 Ms. Marcy Gilroy  
 Ms. Lorraine Glixon  
 Dr. & Mrs. Bertram Gold  
 Mr. & Mrs. Bob Gold  
 Mr. & Mrs. David Gold

Mr. & Mrs. Leonard Gold  
 Ms. Anita Goldberg  
 Mrs. Marion Goldsmith  
 Ms. Patricia Golemme  
 Dr. & Mrs. Michael Gordon  
 Mr. & Mrs. Sanford Gordon  
 Mr. & Mrs. Shep Gordon  
 Mr. & Mrs. Steven Gordon  
 Ms. Elaine Graham  
 Mr. & Mrs. Jeffrey Green  
 Mr. & Mrs. Bertram Greenberg  
 Mr. & Mrs. Stephen Greene  
 Ms. Trudy Gremp  
 Mr. & Mrs. Jonas Gruenberg  
 Mrs. Ruth Gutmann  
 Mr. Gary Harlam  
 Mr. & Mrs. Bert Harris  
 Ms. Marlene Hauck  
 Ms. Jane Hazelcorn  
 Mr. & Mrs. Ken Heitel  
 Ms. Penny Hill  
 Ms. Ava Hodous

Ms. & Mrs. Carl Hooker  
 Ms. Carole Horowitz  
 Mr. Stanley Horwitz  
 Mrs. Edis Horwitz  
 Mr. & Mrs. Chester Hryniewicz  
 Mr. Frank Huguley  
 Ms. Vlatka Ivanisevic  
 Ms. Amy Iverson  
 Ms. Linda Joffe  
 Mr. & Mrs. Keith Johnson  
 Mr. Robert Johnson, Esq.  
 Ms. Kathy Jordan  
 Ms. Jan Joseph  
 Ms. Ellie Kahn  
 Ms. Joyce Karp  
 Dr. Morris Katz  
 Ms. Esther Kaufman  
 Mr. & Mrs. John Kerwin  
 Mr. Jamie Kirkell  
 Joanne Klein &  
 Marshall Nurenberg  
 Mr. & Mrs. Joseph Kogan

Mrs. Beverly Koski  
 Ms. Leonie Kowitz  
 Mr. Jay Krieger  
 Mrs. Sarah Ellen Krinsk  
 Ms. Barbara Kupferberg  
 Dr. & Mrs. Ira Kushnir  
 Ms. Ruth Lando  
 Ms. Jane Lautner  
 Mr. & Mrs. Herbert Lenk  
 Mr. & Mrs. Albert Lerman  
 Mrs. Elaine Lesnik  
 Ms. Kitty Leven  
 Ms. Frances Leventhal  
 Mr. & Mrs. Edward Levi  
 Mrs. Barbara Levin  
 Mrs. Clare Levin  
 Mr. Sandy Alan Levitt  
 Mrs. Doris Libman  
 Ms. Judy Liersch  
 Ms. Carol Lipsky  
 Mr. & Mrs. Norman Lipson  
 Mr. Brian Lipton  
 Dr. & Mrs. Sydney Louis  
 Mrs. Nancy Lowden-Jones  
 Ms. Caryl Magnus  
 Ms. Addie Maier  
 Mr. Robert Malan  
 Ms. Wendy Mann-Resnick  
 Mr. & Mrs. Alvin Marden  
 Mrs. Gertrude Margolick  
 Ms. Sheila Markin  
 Donald Marshall &  
 Cheryl Cohen  
 Ms. Barbara Mask  
 Ms. Carol Mazzoli  
 Mr. & Mrs. Roy McBean  
 Ms. Clare McCarthy



Ms. Lydia McIntire  
 Ms. Gila Meriwether  
 Mrs. Gabrielle Miller  
 Mr. & Mrs. Joseph Miller  
 Mr. & Mrs. Vincent Minora  
 Joanna Mintzer &  
 Donald Ferrell  
 Dr. David Mullen  
 Mrs. Fay Murphy  
 Mr. & Mrs. Richard Myerson  
 Mr. & Mrs. Fred Nagel  
 Mr. & Mrs. John Niles  
 Mrs. Diane Nydorf  
 Mr. Terry O'Brien  
 Ms. B. Elaine Oldwine  
 Ms. Irmhild Olmeda  
 Ms. Peg Pentz  
 Mr. Richard Perlman  
 Pfizer Foundation  
 Mrs. Phyllis Ploener  
 Ms. Yetta Plotnick

Dr. & Mrs. Bruce W. Porter  
 Dr. & Mrs. Theodore Probst  
 Mrs. Alice Rau  
 Ms. Jeannette Regenzweig  
 Ms. Bernadine Rice-Basileus  
 Ms. Grace Riker  
 Mrs. Frances Ringlestein  
 Mr. & Mrs. Jerry Robinov  
 Ms. Mary Rosasco  
 Mr. & Mrs. David Rosenzweig  
 Ms. Eileen Rosenzweig  
 Ms. Susan Rothenberg  
 Mr. & Mrs. Neil Rudin  
 Mr. & Mrs. Howard Sabin  
 Ms. Karleen Sadri  
 Mrs. Adriana Salazar  
 Ms. Rachel Saltzberg  
 Mr. & Mrs. Joseph Salvino  
 Ms. Arlene Salzberg  
 Mrs. Lillian Sands  
 Mr. & Mrs. Jay Saphier

Mrs. Ratna Satya  
 Ms. Gloria Scheiner  
 Mr. & Mrs. Murray Scheiner  
 Mrs. Rhoda Schepart  
 Mr. & Mrs. Arthur Schotz  
 Mr. Elliot Schubiner  
 Mrs. Lois Schulman  
 Ms. Helaine Schwabach  
 Mr. & Mrs. Martin Schwartz  
 Mr. & Mrs. Ken Seplow  
 Mr. & Mrs. Jonathan Shagrin  
 Ms. Kathryn Shay  
 Mrs. Reeva Shoengood  
 Mrs. Ruth Shulan  
 Mr. & Mrs. Larry Shulman  
 Mrs. Margery Shurberg  
 Ms. Susan Siegel  
 Mr. & Mrs. Julius Silberg  
 Mr. & Mrs. Alfred Smith  
 Mr. & Mrs. Samuel Smullin  
 Mr. Brent Solomon



**SUPPORTER****Up to \$49**

Mr. Leonard Solomon  
Mr. & Mrs. Michael Spring  
Ms. Hillary Steele  
Ms. Julia Steele  
Dr. Joni Steinberg  
Mrs. Roberta Steiner  
Mr. & Mrs. Richard Stern  
Mr. & Mrs. Guenther Strauss  
Mrs. Barbara Struth  
Ms. Elva Stuart  
Mr. & Mrs. Tom Stuhley  
Mrs. Rosalie Surrey  
Mr. & Mrs. Harvey Sussman  
Ms. Charlie Ann Syrett  
Ms. Gail Thomas  
Ms. Yvette Thornton  
Ms. Pauline Tolmach  
Ms. Laura Vajda  
Ms. Marilyn Val Verde  
Mr. & Mrs. Michael Van Gliish  
Mr. Andrew Walker  
Mr. Alan Wallack  
Ms. Tammy Walsh

Ms. Sandy Ward  
Mrs. Edith Weinberger  
Mr. & Mrs. Brian Weiner  
Mrs. Judy Weinstein  
Ms. Carol Weisman  
Mr. & Mrs. Douglas Weiss  
Ms. Nina Weitzman  
Mr. & Mrs. Alan Wertheimer  
Dr. Judith Wilcox  
Ms. Peggy Wilhelm  
Ms. Ella Williams  
Ms. Judy Williams  
Mr. & Mrs. David Wolf  
Ms. Ashley Workman  
Mr. Howard Wurtzel  
Mr. & Mrs. Leonard Wyatt  
Mr. David Young  
Mr. & Mrs. Harold Zabin  
Ms. Carol Zabotinsky  
Mr. & Mrs. Harry Zenwirth  
Mr. & Mrs. Sanford Zeman  
Mrs. Dori Zingmond

Anonymous (6)  
Ms. Barbara Adler  
Mr. & Mrs. Joel Adler  
Mrs. Sarah Albert  
Mr. & Mrs. Todd Albrecht  
Mr. & Mrs. Maximilian Alter  
Mr. & Mrs. Kenneth Alexander  
Mrs. Jean Andriesse  
Mr. & Mrs. Dore Anisman  
Mrs. Violet Bailin  
Mr. & Mrs. Sidney Balaban  
Mr. & Mrs. Albert Balk  
Mrs. Gwen Baseman  
Mr. & Mrs. Jerry Beck  
Ms. Joanie Been  
Ms. Alisa Behney  
Mr. & Mrs. William H. Behrenfeld  
Mrs. Ruth Bell  
Mr. & Mrs. Stuart Beloff  
Mr. Shaun Benderson  
Mr. Joel Bernstein  
Dr. Harold Blinder  
Mrs. Ruth Block  
Mr. & Mrs. Richard Bloom  
Ms. Ronni Blumenthal  
Mr. & Mrs. George Borgida  
Dr. & Mrs. Donald Bornstein  
Mr. & Mrs. Jay Brady  
Ms. Pennell Braida-Skinner  
Mr. & Mrs. Ernest Brandt  
Ms. Jennette Brickman  
Mrs. Joan Burman  
Ms. Sandy Cadman  
Ms. Anne Caplan

Ms. Laura Carnevale  
Dr. & Mrs. Alan Cetron  
Mr. & Mrs. Elliot Charnes  
Mr. Bernard Cheeseman  
Mr. Harry Chezan  
Mrs. Geraldine Clayman  
Mrs. Joseph Coel  
Mr. & Mrs. Andrew Cohen  
Ms. Barbara Cohen  
Mr. Edward Cohen  
Mr. & Mrs. Lou Cohen  
Mrs. Phyllis Cohen  
Mr. & Mrs. Sanford Cohen  
Mrs. Sylvia Cohen  
Ms. Kathryn Cooper  
Dr. & Mrs. Dan Corbin  
Mr. Rodney Coville  
Mr. & Mrs. Gilbert Cranberg  
Dr. & Mrs. Howard Crane  
Ms. Julie Davis  
Ms. Phyllis Davis  
Ms. Kathleen Deeney  
Ms. Christine DelMonte  
Mr. Kerry Dennis  
Ms. Pat Dinney  
Mr. & Mrs. Martin Edelman  
Mr. & Mrs. Steve Edwards  
Ms. Josephine Eisenberg  
Mr. & Mrs. Myles Elias  
Mr. Stephen Ellis  
Mr. & Mrs. Harley Ellman  
Ms. Susan Feil  
Ms. Lisette Fernandez  
Mrs. Mildred R. Field  
Ms. Esther Fishman  
Forest Pines Condo Association  
Mr. & Mrs. Robert Forsyth

Mr. Samuel Fredman  
Mr. & Mrs. Eli Freedman  
Ms. Evelyn Friedman  
Mrs. Ruth Friedmann  
Mrs. Rosalyn Gass  
Ms. Halle Ghose  
Ms. Dorothy Lee Gifford  
Mr. & Mrs. Harvey Gochberg  
Mr. & Mrs. Jerome Golden  
Mr. & Mrs. Neal Goldman  
Mr. & Mrs. Joseph Golov  
Mr. & Mrs. Earl Gordon  
Mr. & Mrs. Marshall Gordon  
Mr. & Mrs. Mark Graham  
Mrs. Arthur Grant  
Ms. Nancy Graver  
Mrs. Jean Green  
Mr. & Mrs. Melvin Green  
Ms. Lori Greenbaum  
Mr. Howard Greenberg  
Ms. Bambi Gromko  
Mr. & Mrs. David Gross  
Mr. & Mrs. Alvin Grossman  
Mr. & Mrs. Arthur Grossman  
Mr. & Mrs. David Gruber  
Mr. & Mrs. Seymour Haftel  
Half Acre Construction  
Mr. Harold Halpern  
Ms. Ruth Hample  
Mr. & Mrs. Benjamin Handelman  
Ms. Helga Harris  
Dr. & Mrs. Lee Harrow  
Ms. Dorothy Hawkins  
Mr. David Haymon  
Ms. Lael Hazan  
Mr. Gary Heard

Ms. Tonia Herndon  
Mr. & Mrs. Stanley Hochman  
Mrs. Lola Hoenig  
Mrs. Martha Hoffman  
Ms. June Hoop  
Mr. & Mrs. Herbert Horowitz  
Mr. & Mrs. Michel Huguenin  
Mr. Melvin Hurwitz  
Ms. Florence Illch  
Mr. & Mrs. John Isaacs III  
Ms. Barbara Jacoby  
Mr. Devon Jarrett  
Ms. Christine Jennings  
Jewish War Veterans, Post 172  
Mr. Chris Johnson  
Mr. Charles E. Jones  
Ms. Cindey Jones  
Mr. & Mrs. Martin Kabcenell  
Mr. & Mrs. Fred Kagan  
Ms. Ellen Kallos  
Ms. Carolyn Kaplan  
Mr. & Mrs. Michael Kaplan  
Mrs. Dolores Karpf  
Ms. Leatrice Katz  
Ms. Shannon Katz  
Mr. Charles Kaye  
Ms. Laura Kiley  
Ms. Lenore Kingsberg  
Ms. Gloria Klein  
Dr. & Mrs. Robert Knego  
Ms. Bernice Knopf  
Master Eli Koplin  
Mr. & Mrs. Murray Koren  
Julian Koss & Penny Abrams  
Ms. Vivian Kouvant  
Ms. Rita Kremer  
Mrs. Joan Kretchmer

# THANK YOU!

2010-2011 DONORS

Ms. Sharon Kunkel  
Mr. Harold Kurtz  
Mr. & Mrs. Richard Labinger  
Mrs. Kathryn Larkin  
Mr. & Mrs. James LaRue  
Mr. & Mrs. Leon Laster  
Ms. Ann Lepes  
Mr. & Mrs. Murray Levin  
Ms. Ruth Levin  
Ms. Frances Levinson  
Mr. & Mrs. Gerald Levinson  
Mr. & Mrs. Daniel Levinson  
Mr. & Mrs. Norm Lew  
Mr. Dale Lewis  
Mr. & Mrs. Mel Lipton  
Rev. Jay K. Longacre  
Mr. & Mrs. Jerome Lowen  
LTM Party Store  
Ms. Carol MacPhee  
Mr. & Mrs. Curtis Manasse  
Dr. David Mankowitz  
Ms. Kimberly Manooshian  
Mr. & Mrs. Mark Margolis  
Mr. Aaron Marks  
Mrs. Harriet Marks  
Ms. Judy Marks  
Mr. & Mrs. Donald Markstein  
Mr. & Mrs. Earl Mehlenbacher  
Mr. & Mrs. Myron Mendelson  
D. & Mrs. Stuart Merle  
Mr. & Mrs. Marvin Meyers  
Ms. Susan Michalow  
Mr. & Mrs. Daniel Miller  
Mr. & Mrs. Thomas Miller  
Mr. & Mrs. Scott Mintz  
Ms. Tricia Mier  
Rabbi & Mrs. Joel Mishkin

Mr. & Mrs. John Moore  
Mr. & Mrs. Frank Morano  
Mr. & Mrs. Jeffrey Morris  
Cantor & Mrs. Neil Newman  
Mr. & Mrs. Arnie Nierenberg  
Ms. Gaby Natkin  
Mr. & Mrs. Joseph Nydick  
Mrs. Roslyn Orlin  
Palm Aire Men's Nine Hole  
Golf Association  
Mr. & Mrs. Joseph Parelman  
Ms. Sharon Patrice  
Mr. Martin Pavlick  
Ms. Georgia Pengel Van Vliet  
Mrs. Chaya Perera  
Ms. Robin Pike  
Mr. & Mrs. Scott Pintchuck  
Ms. Hannah Puckhaber  
Ms. Nancy Rand  
Ms. Marlene Resnick  
Mr. & Mrs. Raymond Resnick  
Mr. & Mrs. Richard Rieser  
Mr. & Mrs. Bradley Robbins  
Ms. Elinor Rogosin  
Mr. Gerald Ronkin  
Ms. Maureen Rosenfield  
Mr. & Mrs. Daniel Rubinstein  
Mr. & Mrs. Norman Sage  
Mrs. Clara Sandelman  
Mrs. Freda Sapier  
Mr. & Mrs. Herbert Schiff, Jr.  
Mr. & Mrs. Richard Schiff  
Ms. Patty Schimberg  
Ms. Nedra Schneider  
Mrs. Rita Schwartz  
Ms. Judith Shapiro  
Mr. & Mrs. Sam Shapiro

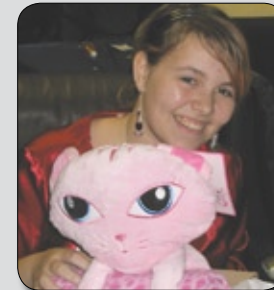
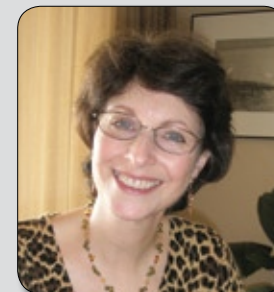
Mr. & Mrs. Mark Sharff  
Mr. David Sheib  
Ms. Kim Sheintal  
Mr. & Mrs. Marvin Shepard  
Mr. & Mrs. Murray Sherry  
Ms. Muriel Shindler  
Dr. & Mrs. Steven Shumer  
Mrs. Inna Sideman  
Mr. & Mrs. Norman Siegel  
Mr. & Mrs. Stuart Siegel  
Ms. Selma Sigelman  
Ms. Allison Silver  
Mr. & Mrs. Bruce Silverberg  
Dr. & Mrs. Larry Silverman  
Mr. & Mrs. Ted Simon  
Mr. & Mrs. Michael Sisk  
Ms. Edna Smith  
Ms. Sondra Sonneborn  
Ms. JoAnn Spiegel  
Mr. & Mrs. Alan Sprintz  
Mrs. Dolly Sprinz  
Mrs. Inge Stanton  
Ms. Sue Stearns  
Ms. Sally Steele  
Mr. & Mrs. Isaac  
Steinberg  
Mrs. Elaine Stern  
Ms. Renee Stevens  
Mrs. Arlene Stolnitz  
Mr. & Mrs. Burton Stone  
Ms. Karen Stone  
Mrs. Muriel Stone  
Mr. & Mrs. Harvey  
Stulmaker  
Ms. Eleanor Sugarman  
Mr. Peter Tannen

Mr. & Mrs. Henry Taplinger  
Peter Thompson & Helen  
Zubronsky  
Tiffany Plaza Association  
Ms. Wendy Tirro  
Mr. & Mrs. Sol Toder  
Mr. & Mrs. Leslie Trubow  
Mr. & Mrs. Samuel Uretsky  
Ms. Balbina Useffoff  
Ms. Shirley Verier  
Mrs. Margot Wallace  
Mr. & Mrs. Norman Walter  
Mr. & Mrs. Herbert Warburg  
Dr. Philip Warren  
Ms. Carolyn Weinberger  
Mr. Daniel Weiner

Mr. & Mrs. Jack Weintraub  
Ms. Sheri Weiss  
Mr. & Mrs. George Wexler  
Ms. Penny Wheeler  
Mr. & Mrs. Bernard Whitman  
Ms. Mary Wilson  
Mr. Rob Winegar  
Mr. & Mrs. Jared Winters  
Mr. Jeffrey Wolfson  
Mr. Kevin Wright  
Dr. & Mrs. David Yamada  
Ms. Debbie Yates  
Mr. & Mrs. Giacomo  
Zandomenego  
Mr. & Mrs. Paul Zatz

*\* Of Blessed Memory*

*If we have inadvertently omitted any individual,  
please accept our apologies and heartfelt  
thanks for your contribution.  
Please call us with any corrections.*



## LEGACY SOCIETY & ENDOWMENT



If you have made a provision in your Will or have named JFCS as the beneficiary of a Charitable Gift Annuity, Charitable Remainder Trust or IRA and your name is not listed as a member of our Legacy Society, please call Andria Bilan, VP of Development at 941-366-2224 so we can properly acknowledge your commitment.

**L'**Dor V'Dor is at the core of Jewish tradition offering promise from our current generation to future generations. The Legacy Society, established in 2005, provides donors the opportunity to make a gift which ensures the long term sustainability of the agency's vital programs and services.

JFCS appreciates the thoughtful planning that results in gifts of bequests, real estate, securities, charitable remainder trusts, gift annuities and life insurance. On behalf of future generations, we thank those who have become Legacy members, ensuring continuum of care for the most vulnerable in our community...children, families and seniors who turn to JFCS when they can't do it alone!

### LEGACY SOCIETY MEMBERS

Scott Anderson	Goldie Feldman	Dorothy & Dr. Milton*	Nora Patterson
Liese Lee Berkowitz	Cecilia Fink	Jacobson	Pamela Reiter
Sidney J. Berkowitz*	Sydney Flanzbaum*	Sue A. Jacobson	Ruth G. Rolfe
Robert & Hope Black	Max J. Frank*	Linda F. Joffe	Adrea & Leo Seligsohn
Theda Bohrer	Jim Fox	Eve R. Kommel	Alice & Fred Taich
Ruth & Bob* Bressler	Stacey Gillman	Clare & Mace* Levin	Sylvia & Doris* Tanner
Barbara Brizdle	Grace M. Goldstein	Lee & Herb* Levine	Marjorie Tick
Judy Cahn	Charlotte P. Graver	Claire Love	Arthur D. Vandross
Albert & Norma Cohen	Bernard Gutmaker	Barbara J. Lupoff	Pauline White
Warren J. Coville	Marilyn Harwell	Sanford Milter	Sally Yanowitz
Shirley & Arnold* Fein	Hannah Honeyman	J Donald & Marie Monsky	

### NAMED ENDOWMENT FUNDS

Often established in memory of a loved one, to commemorate a special occasion or to call attention to a personally important cause, JFCS Named Endowment Funds are lasting tributes that provide support to the agency.

Roland* & Emily Abraham *Endowment Fund	Evelyn S. Brizdle Memorial Fund	Barbara J. Lupoff Supporting Fund
Charles & Betty Ackerman Supporting Fund	Judy Cahn Supporting Fund	Grace Rosen Magill* Jewish Healing Fund
Benderson Family Supporting Fund	Richard F. Cox Memorial Fund	Sanford Milter Beautification Fund
Lee & Sidney Berkowitz* Employee Emergency Fund	Ann* & Alfred Goldstein Endowment Fund	Rabbi Sanford E.* & Leah Saperstein* Tikvah Ve-Tikkun Fund for Hope and Healing
Bob & Hope Black Supporting Fund	Charlotte P. Graver Supporting Fund	Molly & Leonard* Schechter Supporting Fund
Theda Bohrer Supporting Fund in memory of Tracey Jill Shapiro and Wendy Heather Shapiro	Dr. Milton Jacobson Memorial Fund	Tzedakah Supporting Fund
Barbara Brizdle & Larry Schoenberg Supporting Fund	Sue A. Jacobson Supporting Fund	The Harry & Jeanette Weinberg Fund
	Selma* & Paul Klingenstein* Emergency Fund	Sally Yanowitz Supporting Fund
	Lee & Herb* Levine Legacy Fund	
	Michael R. Livingston Memorial Fund	

*\*Of Blessed Memory*

## JEWISH FAMILY & CHILDREN'S SERVICE STAFF

Rose Chapman, LCSW  
*President/CEO*

### CLINICAL AND PROGRAM STAFF

Philip D. Gorelick, ACSW  
*Vice President of Programs*

Pamela Baron, MSW  
*Director of Senior Services*

Dale A. Block, LMFT, CAP  
*Director of Counseling & Jewish Programming*

Betsy Schwartz, MSW  
*Director, Sarasota CARES  
Project Director, Healthy Families/  
Healthy Children*

Teresa Martin  
*Building Strong Families  
Coordinator*

Sandra Baar, MBA  
Katherine Bernal, BSW  
Evan Bishop, MSW  
Joan Bornstein, LCSW  
Marcy Bothroyd, BSW  
Aldo Botter, MBA, MA  
Laura Carnevale, MA  
Lolita Carvallo, BSW  
Rebecca Cesana, MSW,  
*Registered Clinical Social  
Worker Intern*

Jomayra Cestero, MSW  
Susan Colligan, BA  
Deborah Colprit, BSW  
Claudia Coville  
Rosalie Cruz, BA, *MSW Intern*

Nathaniel Davis, M.Ed.  
Kerry B. Dennis, ACSW,  
LCSW, CAP  
Deborah Dunn, LCSW  
Alexa Fernandez-Botero, BSW  
Claudia Figari, LCSW  
Susan Finkelstein, RN, MAS  
Farrah Fishman, BA  
Laurellen Foster, LCSW  
Jessica Gastman, BA,  
*MSW Intern*

Anne Glowacki, MSW, MFT  
Gwen Gold, LMHC, MFT,  
*Doctoral Student in Counseling  
Psychology*

Bambi Furtado Gromko, MA  
Allison Henley, BSW, *Mental  
Health Counseling Intern*

Daniel Huk, MA  
Laura Kiley, LMHC  
Joyce Kreger, BS  
Wendy S. Kulscar, LCSW, CMC  
Brittney Larkin, BSW  
Dale Lewis, BS  
Karen L. Lutz, MA  
Donna McGrath  
Michelle Mathews, BSW  
Judy Meksraitis, BA  
Beverly H. Mishkin, LCSW  
Irene Moksha, M.Psy.  
Charlene Monagas, BSW  
Tavise Morabia, BA  
Sara Mosher, BSW

Kathleen Palmer, MSCP  
Claudia Penarenas  
Glenda Pinkston, BSW  
Jacqueline Platenik, Ph.D.  
Lissette Ricaurte, BSW  
Lori Sandburg, BA  
Heidi Schultz, BSW  
Maram P. Schuster, LCSW, BCD  
Susan K. Siegel, Ph.D.  
Stella Skuza, MA  
Tony Souza, BS  
Carolyn Stephens, LCSW  
Wendy Tirro, LCSW  
Missy Trzeciak-Kerr, LMHC, *Doctoral  
Student in Clinical Psychology*  
Kristi Weiland, BA  
Nicole Ziemba, BSW

### ADMINISTRATIVE STAFF

Stephen M. Musco, CPA, MBA  
*Chief Financial Officer*

Andria Keil Bilan  
*Vice President of Development*

Carol Balliet, *Financial Assistant*  
Joanie Been, *Marketing Intern*  
Margarita Bejarano, *Child Care  
Assistant*

Debra Bellamy, *Fiscal-HR Compliance  
Manager*

Amanda Cattaneo, *Americorp VISTA*  
Karin Clemons, *National &  
Government Grant Writer*

Janet Conway, *Child Care Assistant*  
Kay del Rosario, *Accounting Clerk*  
Josephine Eisenberg, *Associate  
Development Director*  
Yvette Fernandez, *Child Care Assistant*  
Lynne Georgette, *Administrative  
Assistant*  
Sarah Hill, *Child Care Assistant*  
June Hoop, *Billing Coordinator*  
April Johns, *Child Care Assistant*  
Marty Katz, *Development Director of  
Community Resources*  
Jean Langelle, *AARP Senior  
Employment Program*

Barbara Levy, *Administrative Assistant*  
Maria Moniz, *Quality Improvement  
Technician*

Nojia Moore, *Receptionist*  
Viviana Murphy, *Child Care Assistant*  
Denise Roberts, *Director of Special  
Projects*

Lewis Jeffrey Rohleder, *Accountant*  
Angel Santiago, *Custodian*  
Micheline A. Sapia, *Office Assistant*  
Deborah Stafford, *Receptionist*  
Eboni Stephens, *Administrative  
Assistant*

Shirley Toutant, *S.O.S. Van Driver*  
Warren Wing, *S.O.S. Van Driver*  
Kevin Wright, *Technology Specialist*  
Caroline G. Zucker, *Coordinator of  
Volunteer Resources*

## BOARD OF DIRECTORS 2010-2011

**CHAIR**  
Marie Monsky

**CHAIR ELECT**  
Richard Segall

**VICE CHAIRS**  
David Shukovsky  
Ira Wiesner

**SECRETARY**  
Kathy Killion

**TREASURER**  
Barbara Brizdle

Gerri Aaron  
Scott Anderson  
Suzanne Bralow  
Malcolm Candlish  
Larry Eger  
Roselyn Ehrenpreis  
Harvey Gleeksman  
Harold Joels  
Ken Marsh  
Joe Mendels  
Sanford Milter  
Pamela Reiter  
Betty Schoenbaum  
Adrea Seligsohn  
Steve Wilberding

Judy Cahn  
**PAST BOARD CHAIR**

Richard Blumenthal  
Alice Taich  
**HONORARY LIFETIME MEMBERS**

### MEMBER AGENCY OF



The Jewish Federation  
OF SARASOTA-MANATEE





*"Inside the Window of  
Community Compassion"*

**DEBBIE DANNHEISSER, ARTIST**



JEWISH FAMILY & CHILDREN'S SERVICE  
OF SARASOTA-MANATEE, INC.

2688 FRUITVILLE ROAD  
SARASOTA, FL 34237-5223  
TEL: 941.366.2224  
FAX 941.366.2982  
[WWW.JFCS-CARES.ORG](http://WWW.JFCS-CARES.ORG)

Annual Report Designed by  
Design Marketing Group, Inc.  
[www.dmg Sarasota.com](http://www.dmg Sarasota.com)

